

Elevation / Section Legend

- BAL1 Balustrade Type 1:
Semi-Frameless clear glass balustrade.
Framing system, finish similar to PF1
- BAL2 Balustrade Type 2:
Semi-Frameless translucent glass balustrade.
Framing system, finish similar to PF5
- BAL3 Balustrade Type 3:
Semi-Frameless clear glass balustrade fixed to
solid spandrel panel/parapet wall. Framing system,
finish similar to PF1
- BAL4 Balustrade Type 4:
Perforated Architectural metal balustrade. Finish similar to
PF7 + PF8
- BAL5 Balustrade Type 5:
Fixed vertical metal fns. Finish similar to PF8

- BRK1 Brick Type 1:
Face brick similar in colour to Bowral 'Chillingham White'
- BRK2 Brick Type 2:
Glazed face brick to address landscaped areas
Colour similar to Austral Bricks 'Allure-Lulu'
- COF1 Concrete, off form
Clear finish or to landscape architect's specification
- GC1 Glass, Clear, Type 1:
Glass, clear, to Basix and Acoustic report requirements.
Aluminium framing system, finish similar to PF5
- GC2 Glass, Clear, Type 2:
Glass, clear, to Basix and Acoustic report requirements.
Aluminium framing system, finish similar to PF3
- CL1 Cladding Type 1:
Metal cladding, colour similar to PF5

- CL2 Cladding Type 2:
Metal cladding, colour similar to PF2
- CL3 Cladding Type 3:
Timber plastic composite cladding, similar to 'spotted gum'
- CL4 Cladding Type 4:
FC cladding, colour similar to PF4
- CL5 Cladding Type 5:
Metal cladding, colour similar to PF8
- CL6 Cladding Type 6:
Metal cladding, colour similar to PF7
- GT1 Glass, Translucent, Type 1:
Glass, Translucent, to Basix and Acoustic report requirements.
Aluminium framing system, finish similar to PF5

- GT2 Glass, Translucent, Type 2:
Glass, Translucent, to Basix and Acoustic report requirements.
stain finish equal to Keim concrete Lasur system, similar to PF3
- GCB1 Glass, Colourback, Type 1:
Glass, Dark Grey, to Basix and Acoustic report requirements.
Aluminium framing system, finish similar to PF5
- GCB2 Glass, Colourback, Type 2:
Glass, Dark Grey, to Basix and Acoustic report requirements.
Aluminium framing system, finish similar to PF3
- LV1 Louvre Type 1:
Fixed vertical louvre system. Aluminium, finish similar to PF2
- LV2 Louvre Type 2:
Fixed vertical louvre system. Aluminium, finish similar to PF5
- LV3 Louvre Type 3:
Fixed vertical louvre system. Aluminium, finish similar to PF8

- PC1 Precast Concrete Type 1:
Precast Concrete. Finish: penetrating low maintenance
stain finish equal to Keim concrete Lasur system, similar to PF1
- PC2 Precast Concrete Type 2:
Precast Concrete. Finish: penetrating low maintenance
stain finish equal to Keim concrete Lasur system, similar to PF4
- PC3 Precast Concrete Type 3:
Vertical Profiled Precast Concrete. Finish: penetrating low maintenance
stain finish equal to Keim concrete Lasur system, similar to PF1
- PC4 Precast Concrete Type 4:
Natural Concrete. Finish with horizontal dummy joints
- PF1 Paint Finish Type 1:
Natural White
Finish similar to Dulux 'Natural White'
- PF2 Paint Finish Type 2:
Finish similar to Dulux 'Flat White' powder coat

- PF3 Paint Finish Type 3:
Finish similar to Dulux 'Flooded Gum'
- PF4 Paint Finish Type 4:
Finish similar to Dulux 'Black Caviar'
- PF5 Paint Finish Type 5:
Finish similar to Dulux powder coat 'Black Ace'
- PF6 Paint Finish Type 6:
Finish similar to Dulux 'Harold'
- PF7 Paint Finish Type 7:
Finish similar to Dulux Electro 'scintillation' powder coat
- PF8 Paint Finish Type 8:
Finish similar to Dulux Electro 'Shimmering
Champagne' powder coat

- SC1 Screen Type 1:
Aluminium slat fence, finish similar to PF2
- SC2 Screen Type 2:
Metal louvered screen at mechanical
air intake. Colour to match PF5
- SC3 Screen Type 3:
Metal framed shedding structure with timber battens
- SC4 Screen Type 4:
Vertical aluminium screen, finish to match PF5
- SC5 Screen Type 5:
Metal louvered screen at mechanical
air intake. Colour to match PF1
- SC6 Screen Type 6:
Metal louvered screen at mechanical
air intake. Colour to match PF6

NOTES

THIS DRAWING IS THE COPYRIGHT © OF TURNER. NO REPRODUCTION WITHOUT PERMISSION. UNLESS NOTED OTHERWISE THIS
DRAWING IS NOT FOR CONSTRUCTION. ALL DIMENSIONS AND LEVELS ARE TO BE CHECKED ON SITE PRIOR TO THE COMMENCEMENT
OF WORK. INFORM TURNER OF ANY DISCREPANCIES FOR CLARIFICATION BEFORE PROCEEDING WITH WORK. DRAWINGS ARE NOT TO
BE SCALED. USE ONLY PROVIDED DIMENSIONS. REFER TO CONSULTANT DOCUMENTATION FOR FURTHER INFORMATION.

DL25 Quality Endorsed Company ISO 9001:2008, Registration Number 25475
Notified Architect: Nicholas Turner, BBS, ABA, B6 064 084 911

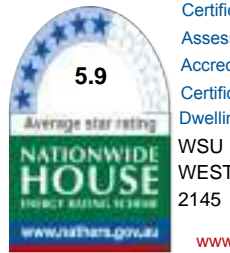
Thermal Comfort Specification		
Building Element	Material	Insulation
External Wall	Cavity Brick, Brick-Veneer, Concrete, tiled	None, R1.0, R1.5*
Internal Wall	Plasterboard on Stud	None
Roof	Concrete	None
Ceiling	Concrete above Plasterboard	None, R2.5*
Floor	Concrete Slab	None, 0.5, 1.0*
Floor Coverings	Carpet to Living and Bedrooms Tiles to Bathrooms and Kitchens	N/A
Windows	Group A Glazed Systems: U-value = 6.7 & SHGC = 0.57, U- value = 5.4 & SHGC = 0.49*	N/A
	Group B Glazed Systems: U-value = 6.7 & SHGC = 0.70, U- value = 5.4 & SHGC = 0.58*	

Draught seals to all external windows and doors

Note: *Please refer to the BASIX Report for the individual insulation requirements of each
residential dwelling.

LEGEND

- STUDIO
- 1 BEDROOM UNIT
- 2 BEDROOM UNIT
- 3 BEDROOM UNIT
- LOBBY AREAS



Certificate no.: 0001716160
Assessor Name: Tieg Thien Huynh
Accreditation no.: 20987
Certificate date: 24 July 2017
Dwelling Address:
WSU WESTMEAD, NSW
2145
www.nathers.gov.au



Rev.	Date	Approved by	Revision Notes
S	22.12.16	JM	Development Application
T	22.06.17	JM	Development Application Amendments
U	03.07.17	JM	Development Application Amendments
V	31.08.17	JM	Development Application Amendments
W	05.10.17	JM	Development Application Amendments
X	10.10.17	JM	Development Application Amendments

CLIENT

Deicorp
Level 3, 161 Redfern Street, Redfern
NSW 2016, Australia

Project Title
WSU - Lot 4
158-164 Hawkesbury Road, 2a Darcy Road Westmead NSW 2145 Australia

Drawing Title
**GA Sections
Section A-A**

Scale
1:200 @A1, 50%@A3

Status
For Information

Project No.
16001

Dwg No.
DA-310-001

Drawn by
turner

Rev
X

North

TURNER

L7, ONE Oxford Street
Darlinghurst NSW 2010
Australia

T +61 2 8558 0200
F +61 2 8558 0208
www.turner.com.au

THIS DRAWING IS THE COPYRIGHT © OF TURNER. NO REPRODUCTION WITHOUT PERMISSION. UNLESS NOTED OTHERWISE THIS DRAWING IS **NOT FOR CONSTRUCTION**. ALL DIMENSIONS AND LEVELS ARE TO BE CHECKED ON SITE PRIOR TO THE COMMENCEMENT OF WORK. INFORM TURNER OF ANY DISCREPANCIES FOR CLARIFICATION BEFORE PROCEEDING WITH WORK. DRAWINGS ARE NOT TO BE SCALED. USE ONLY FIGURED DIMENSIONS. REFER TO CONSULTANT DOCUMENTATION FOR FURTHER INFORMATION.

Nominated Architect: Nicholas Turner 0995, ABN 66 064 064 911

Draught seals to all external windows and doors

Note: *Please refer to the BASIX Report for the individual insulation requirements of each residential dwelling

STUDIO
1 BEDROOM UNIT
2 BEDROOM UNIT
3 BEDROOM UNIT
LOBBY AREAS



ABSA
Australian Building Sustainability Association

Class 2 Building Multi-Unit

Certificate Number: 100-0716-403
 Issuance Date: 15/01/2011
 Issuance Name: Truong Thien Huynh
 Issuance Number: 200887
 Issuance Signature: *[Signature]*

Issued under:
 BASIX Thermal Comfort Protocol

BASIX
Building Sustainability Index

Certificate no.: 0001716160
Assessor Name: Trong Thien Huynh
Accreditation no.: 20887
Certificate date: 24 July 2017

WSU
WESTMEAD, NSW
2145
www.nathers.gov.au

CLIENT
Deicorp
Level 3, 161 Redfern Street, Redfern
NSW 2016, Australia

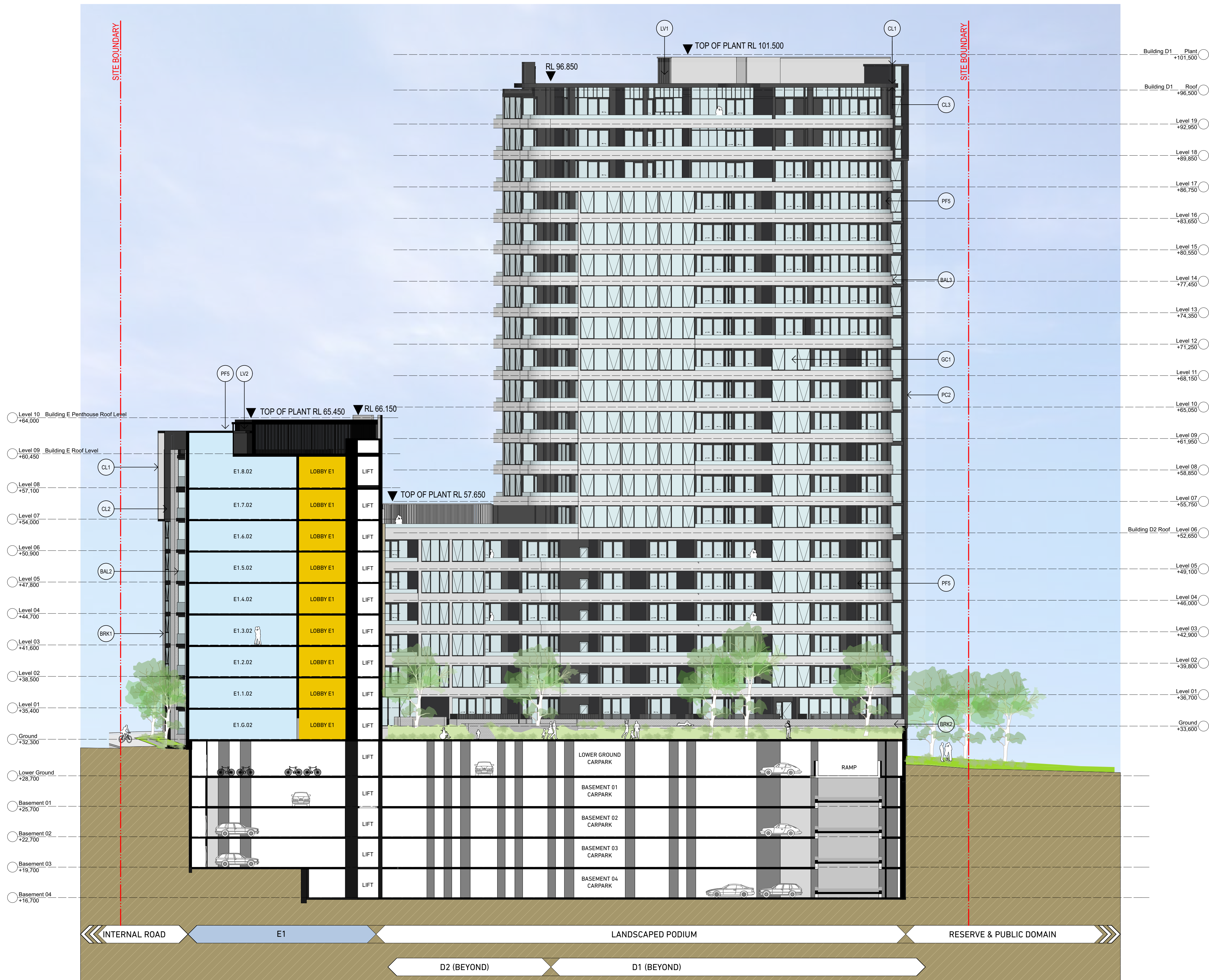
GA Sections
Section B-B

TURNER

L 7, ONE Oxford Street
Darlinghurst NSW 2010
Australia



- | | | | | | | | | | | | | | |
|------|--|------|--|-----|---|------|--|-----|--|-----|--|-----|---|
| BA1L | Balustrade Type 1:
Semi-Frameless clear glass balustrade.
Framing system, finish similar to PF1 | BRK1 | Brick Type 1:
Face brick similar in colour to Bowers' Chillingham White | CL2 | Cladding Type 2:
Metal cladding, colour similar to PF2 | GT2 | Glass, Translucent, Type 2:
Glass, Translucent, to Basic and Acoustic report requirements.
Aluminium framing system, finish similar to PF3 | PC1 | Precast Concrete Type 1:
Precast Concrete, Finish: penetrating low maintenance stain finish equal to Keim concrete Lasur system, similar to PF1 | PF3 | Paint Finish Type 3:
Finish similar to Dulux 'Flooded Gum' | SC1 | Screen Type 1:
Aluminium slat fence, finish similar to PF2 |
| BA2L | Balustrade Type 2:
Semi-Frameless translucent glass balustrade.
Framing system, finish similar to PF5 | BRK2 | Brick Type 2:
Glazed face brick to address landscaped areas
Colour similar to Austral Bricks 'Allure-Lulu' | CL3 | Cladding Type 3:
Timber plastic composite cladding, similar to 'spotted gum' | GOB1 | Glass, Colourback, Type 1:
Glass, Dark Grey, to Basic and Acoustic report requirements.
Aluminium framing system, finish similar to PF5 | PC2 | Precast Concrete Type 2:
Precast Concrete, Finish: penetrating low maintenance stain finish equal to Keim concrete Lasur system, similar to PF4 | PF4 | Paint Finish Type 4:
Finish similar to Dulux 'Black Caviar' | SC2 | Screen Type 2:
Metal louvered screen at mechanical air intake. Colour to match PF5 |
| BA3L | Balustrade Type 3:
Semi-Frameless clear glass balustrade fixed to solid spanrel panel/parapet wall. Framing system, finish similar to PF1 | COF1 | Concrete, off form
Clear finish or to landscape architect's specification | CL4 | Cladding Type 4:
FC cladding, colour similar to PF4 | GOB2 | Glass, Colourback, Type 2:
Glass, Dark Grey, to Basic and Acoustic report requirements.
Aluminium framing system, finish similar to PF3 | PC3 | Precast Concrete Type 3:
Vertical Profiled Precast Concrete. Finish: penetrating low maintenance stain finish equal to Keim concrete Lasur system, similar to PF1 | PF5 | Paint Finish Type 5:
Finish similar to Dulux powder coat 'Black Aeol' | SC3 | Screen Type 3:
Metal framed shedding structure with timber battens |
| BA4L | Balustrade Type 4:
Perforated architectural metal balustrade. Finish similar to PF7 + PF8 | GC1 | Glass, Clear, Type 1:
Glass, clear, to Basic and Acoustic report requirements.
Aluminium framing system, finish similar to PF5 | CL5 | Cladding Type 5:
Metal cladding, colour similar to PF8 | LV1 | Louvre Type 1:
Fixed vertical louvre system. Aluminium, finish similar to PF2 | PC4 | Precast Concrete Type 4:
Natural Concrete. Finish with horizontal dummy joints | PF6 | Paint Finish Type 6:
Finish similar to Dulux 'Harkol' | SC4 | Screen Type 4:
Vertical aluminium screen, finish to match PF5 |
| BA5L | Balustrade Type 5:
Fixed vertical metal fins. Finish similar to PF8 | GC2 | Glass, Clear, Type 2:
Glass, clear, to Basic and Acoustic report requirements.
Aluminium framing system, finish similar to PF3 | CL6 | Cladding Type 6:
Metal cladding, colour similar to PF7 | LV2 | Louvre Type 2:
Fixed vertical louvre system. Aluminium, finish similar to PF5 | PF1 | Paint Finish Type 1:
Natural White
Finish similar to Dulux 'Natural White' | PF7 | Paint Finish Type 7:
Finish similar to Dulux Electro 'scintillation' powder coat | SC5 | Screen Type 5:
Metal louvered screen at mechanical air intake. Colour to match PF1 |
| | | CL1 | Cladding Type 1:
Metal cladding, colour similar to PF5 | | | LV3 | Louvre Type 3:
Fixed vertical louvre system. Aluminium, finish similar to PF8 | PF2 | Paint Finish Type 2:
Finish similar to Dulux 'Flat White' powder coat | PF8 | Paint Finish Type 8:
Finish similar to Dulux Electro 'Shimmering Champagne' powder coat | SC6 | Screen Type 6:
Metal louvered screen at mechanical air intake. Colour to match PF6 |



Elevation / Section Legend

- BAL1 Balustrade Type 1:
Semi-Framelless clear glass balustrade.
Framing system, finish similar to PF1
- BAL2 Balustrade Type 2:
Semi-Framelless translucent glass balustrade.
Framing system, finish similar to PF5
- BAL3 Balustrade Type 3:
Semi-Framelless clear glass balustrade fixed to
solid spandrel panel/parapet wall. Framing system,
finish similar to PF1
- BAL4 Balustrade Type 4:
Perforated Architectural metal balustrade. Finish similar to
PF7 + PF8
- BAL5 Balustrade Type 5:
Fixed vertical metal fins. Finish similar to PF8

- BRK1 Brick Type 1:
Face brick similar in colour to Bowral 'Chillingham White'
- BRK2 Brick Type 2:
Glazed face brick to address landscaped areas
Colour similar to Austral Bricks 'Allure-Lulu'
- COF1 Concrete, off form
Clear finish or to landscape architect's specification
- GC1 Glass, Clear, Type 1:
Glass, clear, to Basix and Acoustic report requirements.
Aluminium framing system, finish similar to PF5
- GC2 Glass, Clear, Type 2:
Glass, clear, to Basix and Acoustic report requirements.
Aluminium framing system, finish similar to PF3
- CL1 Cladding Type 1:
Metal cladding, colour similar to PF5

- CL2 Cladding Type 2:
Metal cladding, colour similar to PF2
- CL3 Cladding Type 3:
Timber plastic composite cladding, similar to 'spotted gum'
- CL4 Cladding Type 4:
FC cladding, colour similar to PF4
- CL5 Cladding Type 5:
Metal cladding, colour similar to PF8
- CL6 Cladding Type 6:
Metal cladding, colour similar to PF7
- GT1 Glass, Translucent, Type 1:
Glass, Translucent, to Basix and Acoustic report requirements.
Aluminium framing system, finish similar to PF5

- GT2 Glass, Translucent, Type 2:
Glass, Translucent, to Basix and Acoustic report requirements.
stain finish equal to Keim concrete Lasur system, similar to PF3
- GCB1 Glass, Colourback, Type 1:
Glass, Dark Grey, to Basix and Acoustic report requirements.
Aluminium framing system, finish similar to PF5
- GCB2 Glass, Colourback, Type 2:
Glass, Dark Grey, to Basix and Acoustic report requirements.
Aluminium framing system, finish similar to PF3
- LV1 Louvre Type 1:
Fixed vertical louvre system. Aluminium, finish similar to PF2
- LV2 Louvre Type 2:
Fixed vertical louvre system. Aluminium, finish similar to PF5
- LV3 Louvre Type 3:
Fixed vertical louvre system. Aluminium, finish similar to PF8

- PC1 Precast Concrete Type 1:
Precast Concrete. Finish: penetrating low maintenance
stain finish equal to Keim concrete Lasur system, similar to PF1
- PC2 Precast Concrete Type 2:
Precast Concrete. Finish: penetrating low maintenance
stain finish equal to Keim concrete Lasur system, similar to PF4
- PC3 Precast Concrete Type 3:
Vertical Profiled Precast Concrete. Finish: penetrating low maintenance
stain finish equal to Keim concrete Lasur system, similar to PF1
- PC4 Precast Concrete Type 4:
Natural Concrete. Finish with horizontal dummy joints
- PF1 Paint Finish Type 1:
Natural White
Finish similar to Dulux 'Natural White'
- PF2 Paint Finish Type 2:
Finish similar to Dulux 'Flat White' powder coat

- PF3 Paint Finish Type 3:
Finish similar to Dulux 'Flooded Gum'
- PF4 Paint Finish Type 4:
Finish similar to Dulux 'Black Caviar'
- PF5 Paint Finish Type 5:
Finish similar to Dulux powder coat 'Black Ace'
- PF6 Paint Finish Type 6:
Finish similar to Dulux 'Harold'
- PF7 Paint Finish Type 7:
Finish similar to Dulux Electro 'scintillator' powder coat
- PF8 Paint Finish Type 8:
Finish similar to Dulux Electro 'Shimmering
Champagne' powder coat

- SC1 Screen Type 1:
Aluminium slat fence, finish similar to PF2
- SC2 Screen Type 2:
Metal louvered screen at mechanical
air intake. Colour to match PF5
- SC3 Screen Type 3:
Metal framed shedding structure with timber battens
- SC4 Screen Type 4:
Vertical aluminium screen, finish to match PF5
- SC5 Screen Type 5:
Metal louvered screen at mechanical
air intake. Colour to match PF1
- SC6 Screen Type 6:
Metal louvered screen at mechanical
air intake. Colour to match PF6

NOTES

THIS DRAWING IS THE COPYRIGHT © OF TURNER. NO REPRODUCTION WITHOUT PERMISSION. UNLESS NOTED OTHERWISE THIS
DRAWING IS NOT FOR CONSTRUCTION. ALL DIMENSIONS AND LEVELS ARE TO BE CHECKED ON SITE PRIOR TO THE COMMENCEMENT
OF WORK. IF ANY DISCREPANCIES FOR CLARIFICATION BEFORE PROCEEDING WITH WORK. DRAWINGS ARE NOT TO
BE SCALED. USE ONLY PROVIDED DIMENSIONS. REFER TO CONSULTANT DOCUMENTATION FOR FURTHER INFORMATION.

DL/CS Quality Endorsed Company ISO 9001:2008, Registration Number 25475
Notified Architect: Nicholas Turner, 8885, AEN 88 064 084 911

Thermal Comfort Specification		
Building Element	Material	Insulation
External Wall	Cavity Brick, Brick-Veneer, Concrete, Hefel	None, R1.0, R1.5*
Internal Wall	Plasterboard on Stud	None
Roof	Concrete	None
Ceiling	Concrete above Plasterboard	None, R2.5*
Floor	Concrete Slab	None, 0.5, 1.0*
Floor Coverings	Carpet to Living and Bedrooms Tiles to Bathrooms and Kitchens	N/A
Windows	Group A Glazed Systems: U-value = 6.7 & SHGC = 0.57, U- value = 5.4 & SHGC = 0.49*	N/A
	Group B Glazed Systems: U-value = 6.7 & SHGC = 0.70, U- value = 5.4 & SHGC = 0.58*	
Draught seals to all external windows and doors		
Note: *Please refer to the BASIX Report for the individual insulation requirements of each residential dwelling.		

LEGEND

- STUDIO
- 1 BEDROOM UNIT
- 2 BEDROOM UNIT
- 3 BEDROOM UNIT
- LOBBY AREAS



Certificate no.: 0001716160
Assessor Name: Tieg Thien Huynh
Accreditation no.: 20887
Certificate date: 24 July 2017
Average star rating: 5.9
NATIONWIDE HOUSE
WESTMEAD, NSW 2145
www.nathers.gov.au
www.nathers.gov.au

Rev.	Date	Approved by	Revision Notes
S	22.12.16	JM	Development Application
T	22.06.17	JM	Development Application Amendments
U	03.07.17	JM	Development Application Amendments

CLIENT
Deicorp
Level 3, 161 Redfern Street, Redfern
NSW 2016, Australia

Project Title
WSU - Lot 4
158-164 Hawkesbury Road, 2a Darcy Road Westmead NSW 2145 Australia
Drawing Title
**GA Sections
Section C-C**
Scale
1:200 @A1, 50%@A3
Status
For Information
Project No.
16001
Dwg No.
DA-310-003
Drawn by
turner
Rev
U
North

TURNER
L1, ONE Oxford Street
Darlinghurst NSW 2010
Australia
T +61 2 8668 0000
F +61 2 8668 0088
www.turner.com.au

NOTES

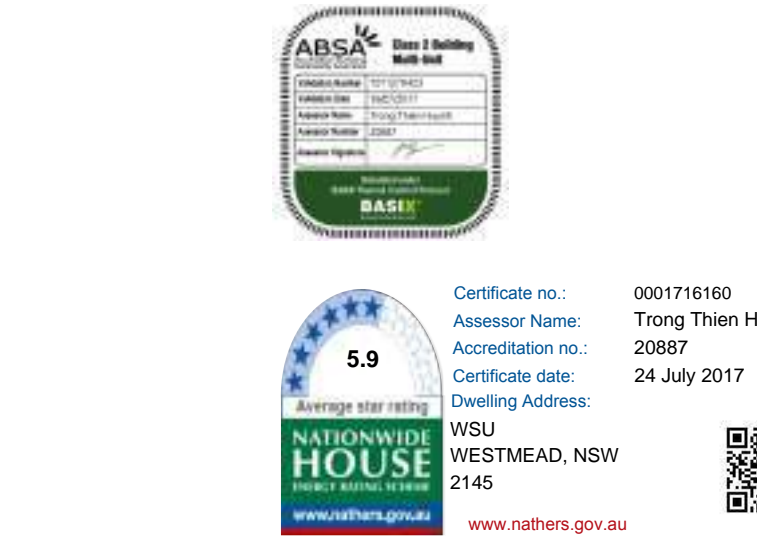
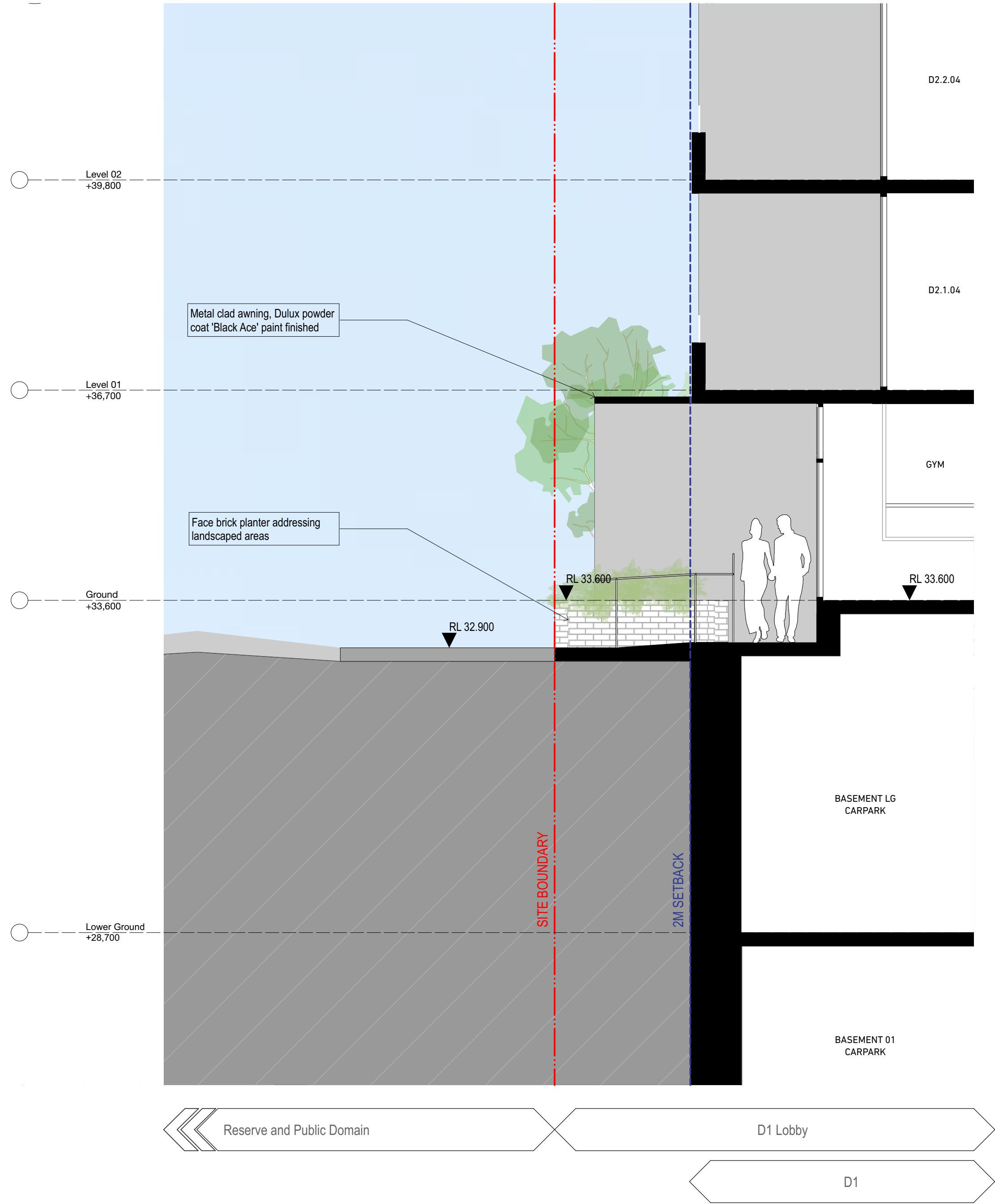
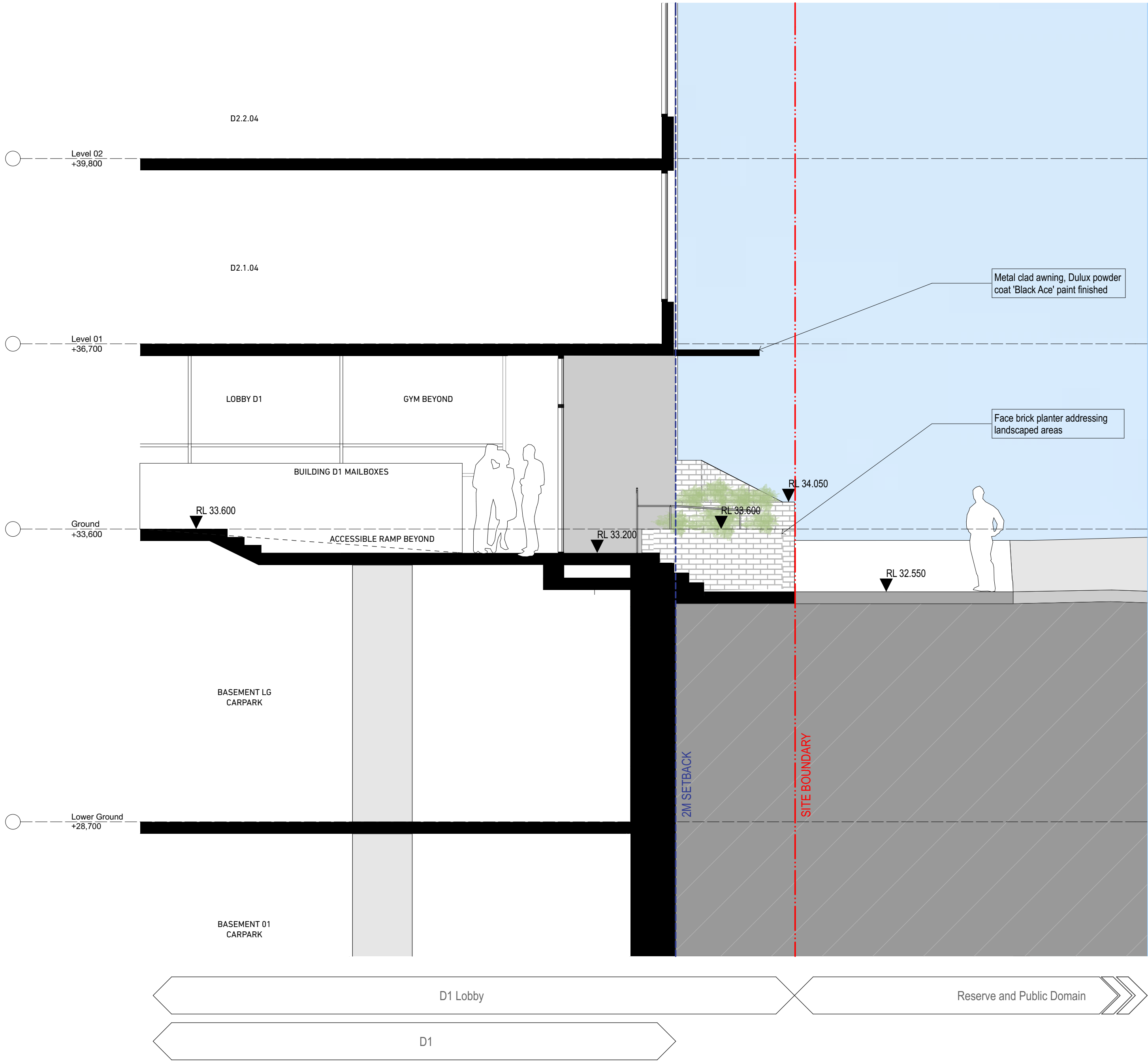
THIS DRAWING IS THE COPYRIGHT © OF TURNER. NO REPRODUCTION WITHOUT PERMISSION. UNLESS NOTED OTHERWISE THIS DRAWING IS NOT FOR CONSTRUCTION. ALL DIMENSIONS AND LEVELS ARE TO BE CHECKED ON SITE PRIOR TO THE COMMENCEMENT OF WORK. IN THE EVENT OF ANY DISCREPANCIES FOR CLARIFICATION BEFORE PROCEEDING WITH WORK. DRAWINGS ARE NOT TO BE SCALED. USE ONLY FIGURED DIMENSIONS. REFER TO CONSULTANT DOCUMENTATION FOR FURTHER INFORMATION.

D:\CS Quality Endorsed Company ISO 9001:2008, Registration Number 25475
Notified Architect: Nicholas Turner, 8895, ABA 88 064 084 911

Thermal Comfort Specification		
Building Element	Material	Insulation
External Wall	Cavity Brick, Brick-Veneer, Concrete, Hefel	None, R1.0, R1.5*
Internal Wall	Plasterboard on Stud	None
Roof	Concrete	None
Ceiling	Concrete above Plasterboard	None, R2.5*
Floor	Concrete Slab	None, 0.5, 1.0*
Floor Coverings	Carpet to Living and Bedrooms Tiles to Bathrooms and Kitchens	N/A
Windows	Group A Glazed Systems: U-value = 6.7 & SHGC = 0.57, U-value = 5.4 & SHGC = 0.49* Group B Glazed Systems: U-value = 6.7 & SHGC = 0.70, U-value = 5.4 & SHGC = 0.58*	N/A

Draught seals to all external windows and doors
Note: *Please refer to the BASIX Report for the individual insulation requirements of each residential dwelling

LEGEND



Rev.	Date	Approved by	Revision Notes
U	05.10.17	JM	Development Application Additional Information
V	11.10.17	JM	Development Application Additional Information

CLIENT
Deicorp
Level 3, 161 Redfern Street, Redfern
NSW 2016, Australia

Project Title
WSU - Lot 4
158-164 Hawkesbury Road, 2a Darcy Road Westmead NSW 2145 Australia

GA Sections Detailed Sections D + E			
Scale	Project No.	16001	Drawn by
@A1, 50%@A3			turner
Status	Dwg No.	DA-310-004	Rev
For Information			V

TURNER
L7, ONE Oxford Street
Darlinghurst NSW 2010
Australia
T +61 2 8668 0000
F +61 2 8668 0088
turner@do.com.au

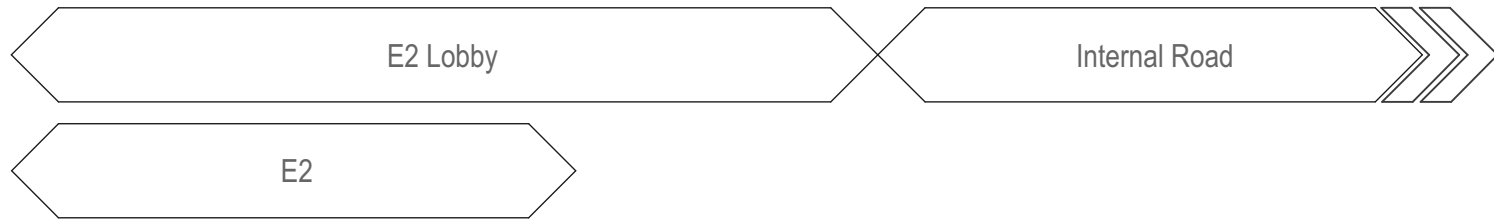
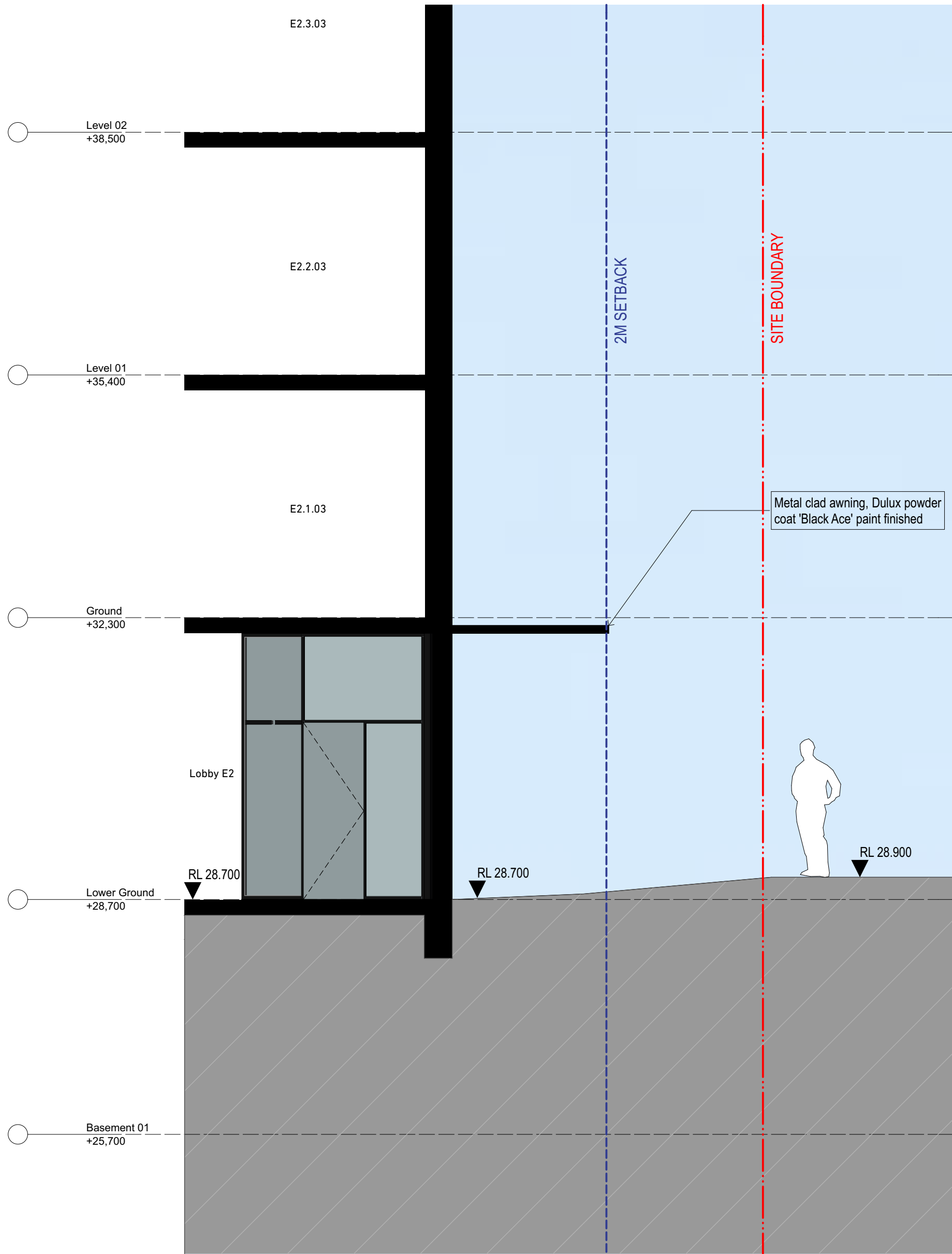
NOTES
THIS DRAWING IS THE COPYRIGHT © OF TURNER. NO REPRODUCTION WITHOUT PERMISSION. UNLESS NOTED OTHERWISE THIS DRAWING IS NOT FOR CONSTRUCTION. ALL DIMENSIONS AND LEVELS ARE TO BE CHECKED ON SITE PRIOR TO THE COMMENCEMENT OF WORK. INFORM TURNER OF ANY DISCREPANCIES FOR CLARIFICATION BEFORE PROCEEDING WITH WORK. DRAWINGS ARE NOT TO BE SCALED. USE ONLY FIGURED DIMENSIONS. REFER TO CONSULTANT DOCUMENTATION FOR FURTHER INFORMATION.

DL25 Quality Endorsed Company ISO 9001:2008, Registration Number 25475
Notified Architect: Nicholas Turner, 8895, ABN 88 064 084 911

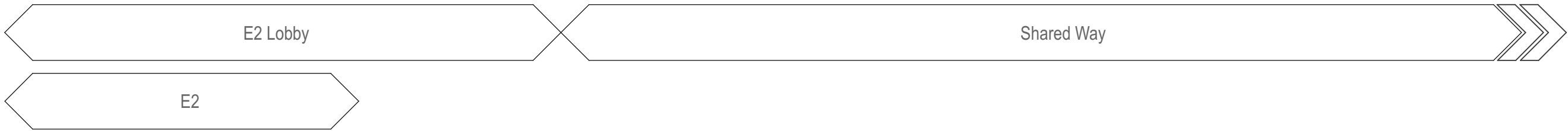
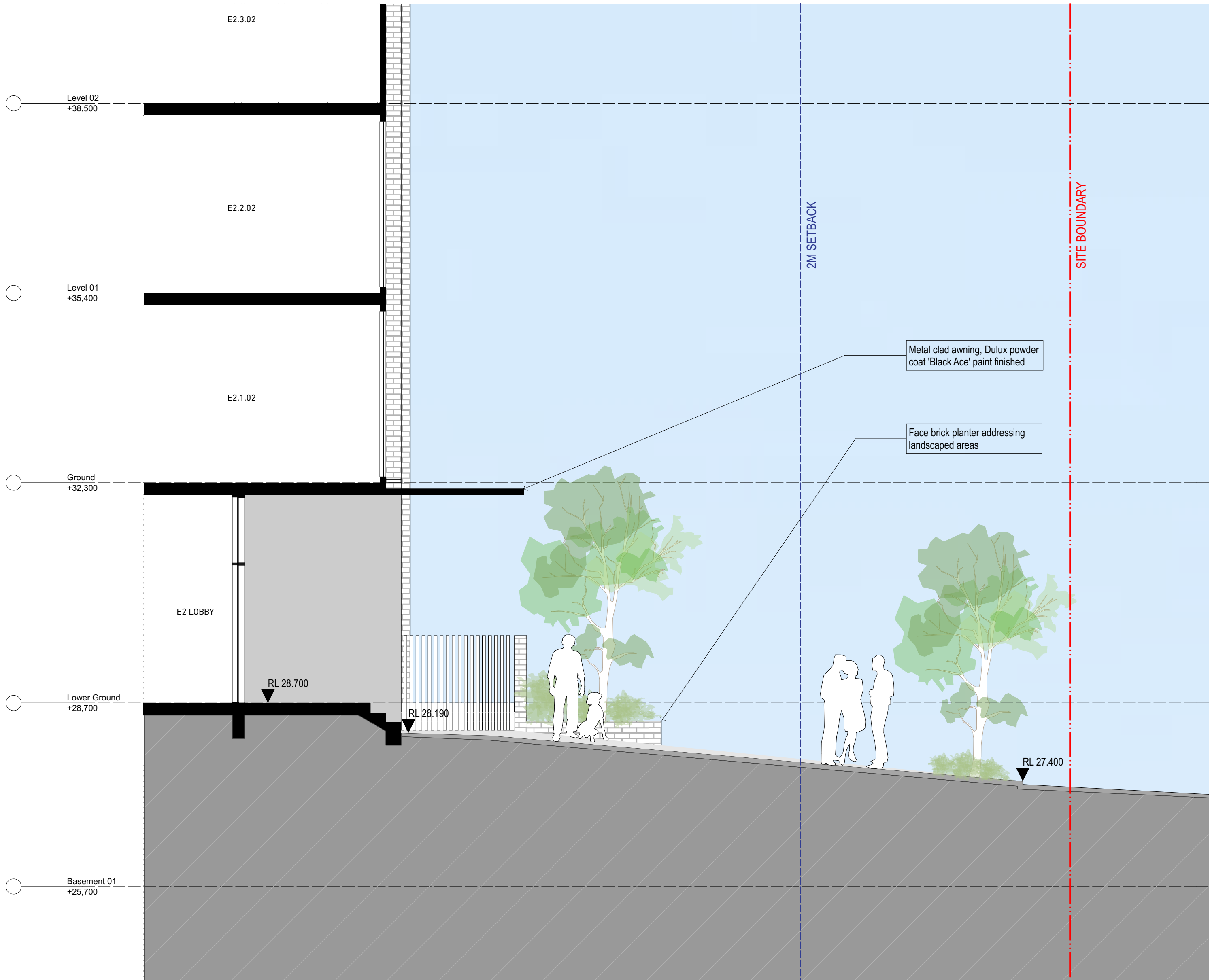
Thermal Comfort Specification		
Building Element	Material	Insulation
External Wall	Cavity Brick, Brick-Veneer, Concrete, Hefbel	None, R1.0, R1.5*
Internal Wall	Plasterboard on Stud	None
Roof	Concrete	None
Ceiling	Concrete above Plasterboard	None, R2.5*
Floor	Concrete Slab	None, 0.5, 1.0*
Floor Coverings	Carpet to Living and Bedrooms Tiles to Bathrooms and Kitchens	N/A
Windows	Group A Glazed Systems: U-value = 6.7 & SHGC = 0.57, U-value = 5.4 & SHGC = 0.49* Group B Glazed Systems: U-value = 6.7 & SHGC = 0.70, U-value = 5.4 & SHGC = 0.58*	N/A

Draught seals to all external windows and doors
Note: *Please refer to the BASIX Report for the individual insulation requirements of each residential dwelling

LEGEND



Section F
1:50



Section G
1:50



Certificate no.: 0001716160
Assessor Name: Tien Thien Huynh
Accreditation no.: 20987
Certificate date: 24 July 2017
Dwelling Address: WSU WESTMEAD, NSW 2145
www.nathers.gov.au



Rev.	Date	Approved by	Revision Notes
U	05.10.17	JM	Development Application Additional Information

CLIENT
Deicorp
Level 3, 161 Redfern Street, Redfern
NSW 2016, Australia

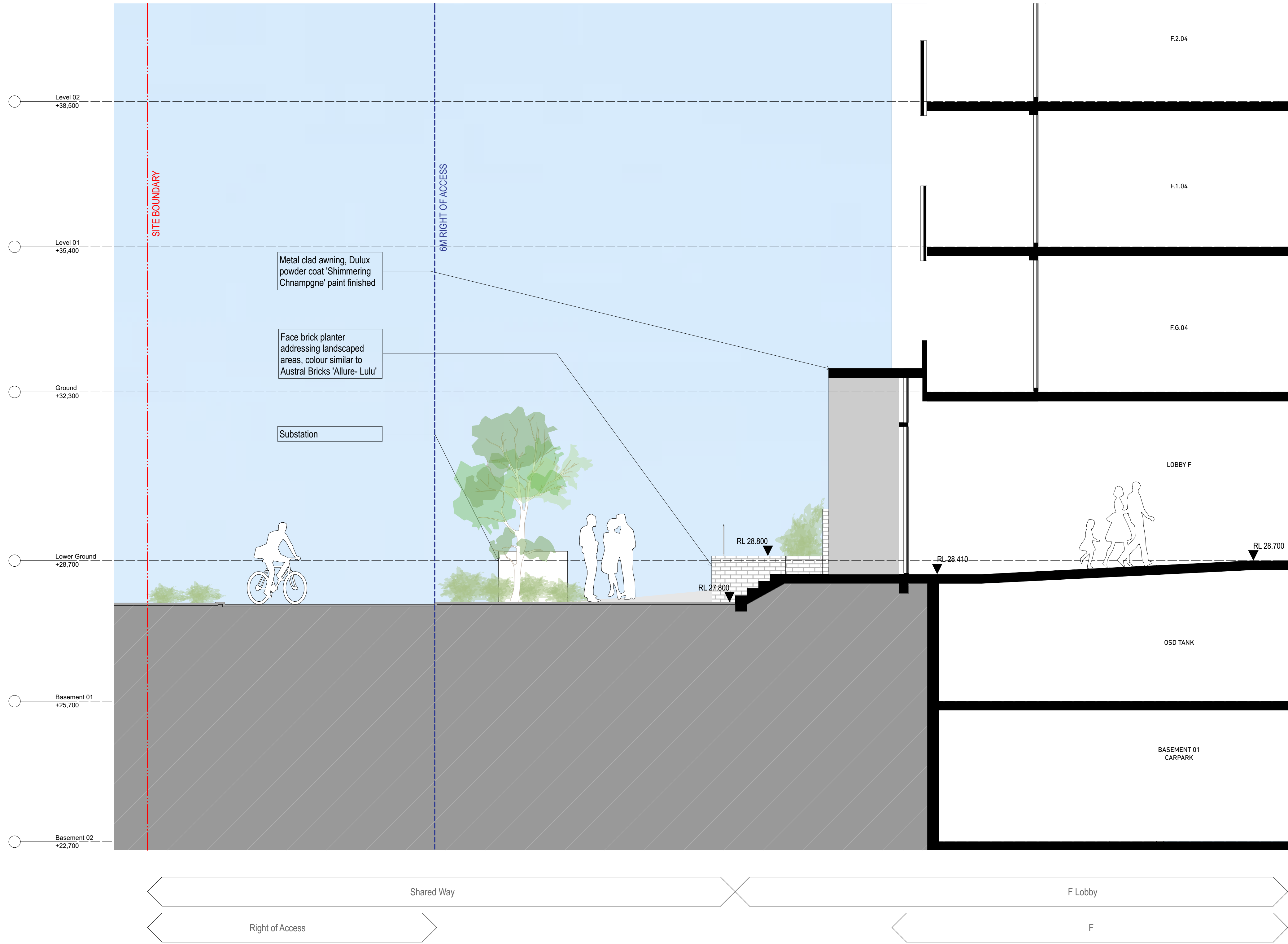
Project Title
WSU - Lot 4
158-164 Hawkesbury Road, 2a Darcy Road Westmead NSW 2145 Australia

Drawing Title GA Sections Detailed Sections F + G			
Scale @A1, 50%@A3	Project No. 16001	Drawn by turner	North
Status For Information	Dwg No. DA-310-005	Rev U	

TURNER

L7, ONE Oxford Street
Darlinghurst NSW 2010
Australia

T +61 2 8668 0000
F +61 2 8668 0088
turner@tdo.com.au



NOTES
THIS DRAWING IS THE COPYRIGHT © OF TURNER. NO REPRODUCTION WITHOUT PERMISSION. UNLESS NOTED OTHERWISE THIS DRAWING IS NOT FOR CONSTRUCTION. ALL DIMENSIONS AND LEVELS ARE TO BE CHECKED ON SITE PRIOR TO THE COMMENCEMENT OF WORK. IN THE EVENT OF ANY DISCREPANCIES FOR CLARIFICATION BEFORE PROCEEDING WITH WORK. DRAWINGS ARE NOT TO BE SCALED. USE ONLY FIGURED DIMENSIONS. REFER TO CONSULTANT DOCUMENTATION FOR FURTHER INFORMATION.

DL22 Quality Endorsed Company ISO 9001:2008, Registration Number 25475
Notified Architect: Nicholas Turner, 8855, AEN 88 064 084 911

Thermal Comfort Specification		
Building Element	Material	Insulation
External Wall	Cavity Brick, Brick-Veneer, Concrete, Hefel	None, R1.0, R1.5*
Internal Wall	Plasterboard on Stud	None
Roof	Concrete	None
Ceiling	Concrete above Plasterboard	None, R2.5*
Floor	Concrete Slab	None, 0.5, 1.0*
Floor Coverings	Carpet to Living and Bedrooms	N/A
	Tiles to Bathrooms and Kitchens	N/A
Windows	Group A Glazed Systems: U-value = 6.7 & SHGC = 0.57, U-value = 5.4 & SHGC = 0.49*	N/A
	Group B Glazed Systems: U-value = 6.7 & SHGC = 0.70, U-value = 5.4 & SHGC = 0.58*	

Draught seals to all external windows and doors
Note: *Please refer to the BASIX Report for the individual insulation requirements of each residential dwelling.

LEGEND



Certificate no.: 0001716160
Assessor Name: Tien Thien Huynh
Accreditation no.: 20987
Certificate date: 24 July 2017
Dwelling Address: WSU WESTMEAD, NSW 2145
www.nathers.gov.au



Rev.	Date	Approved by	Revision Notes
U	05.10.17	JM	Development Application Additional Information
V	10.10.17	JM	Development Application Additional Information

CLIENT
Deicorp
Level 3, 161 Redfern Street, Redfern
NSW 2016, Australia

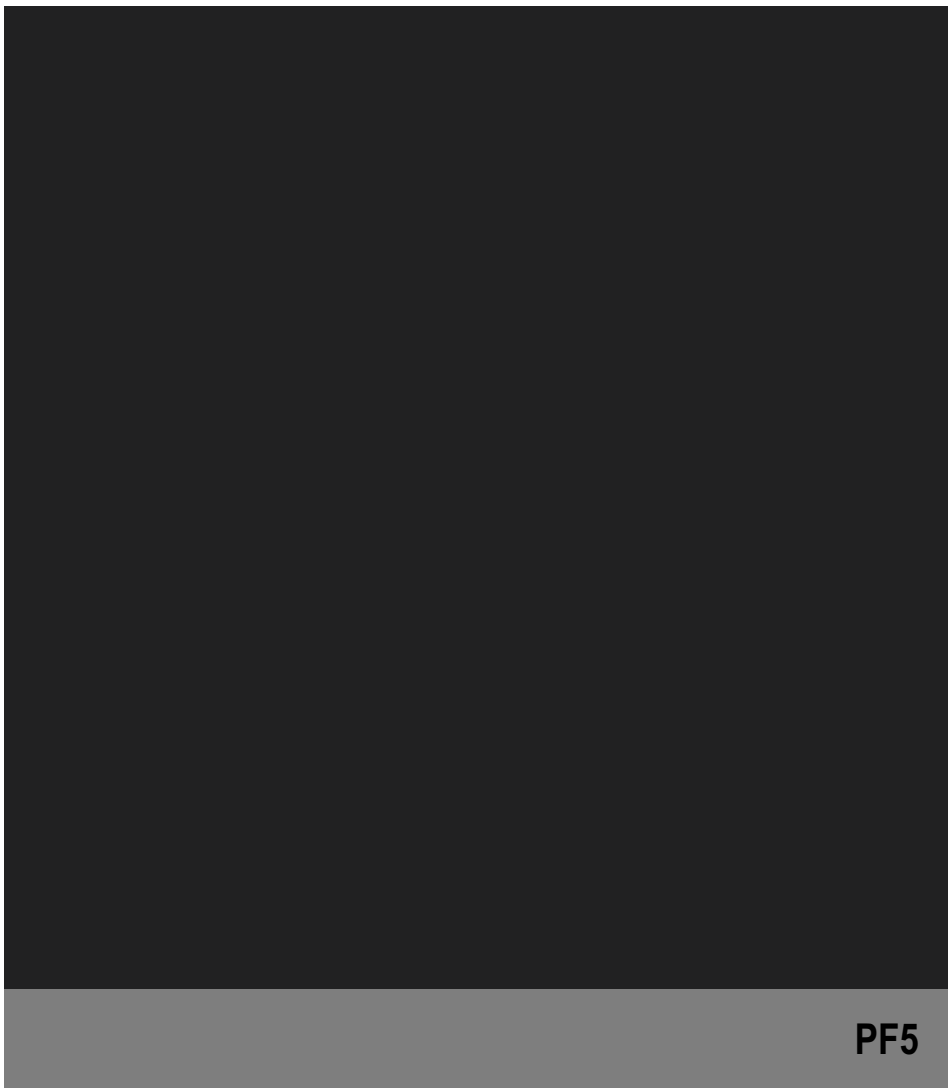
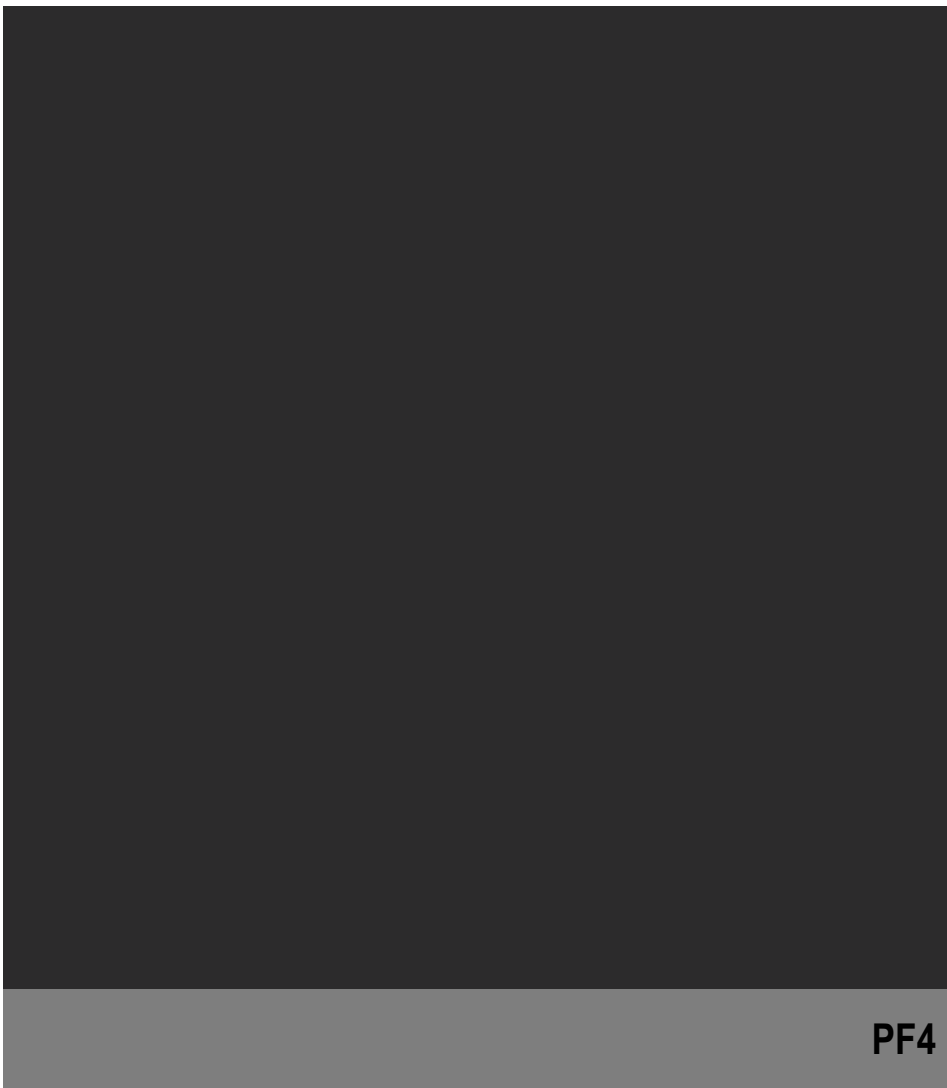
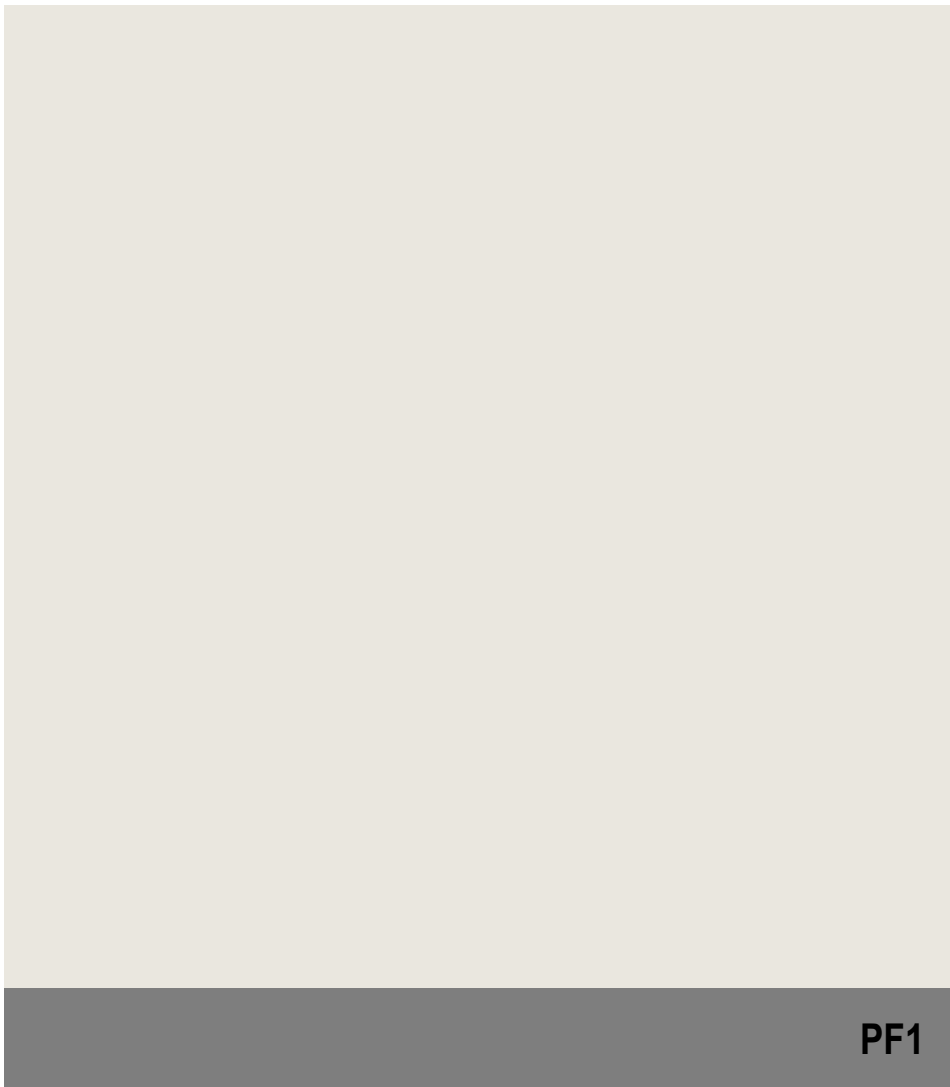
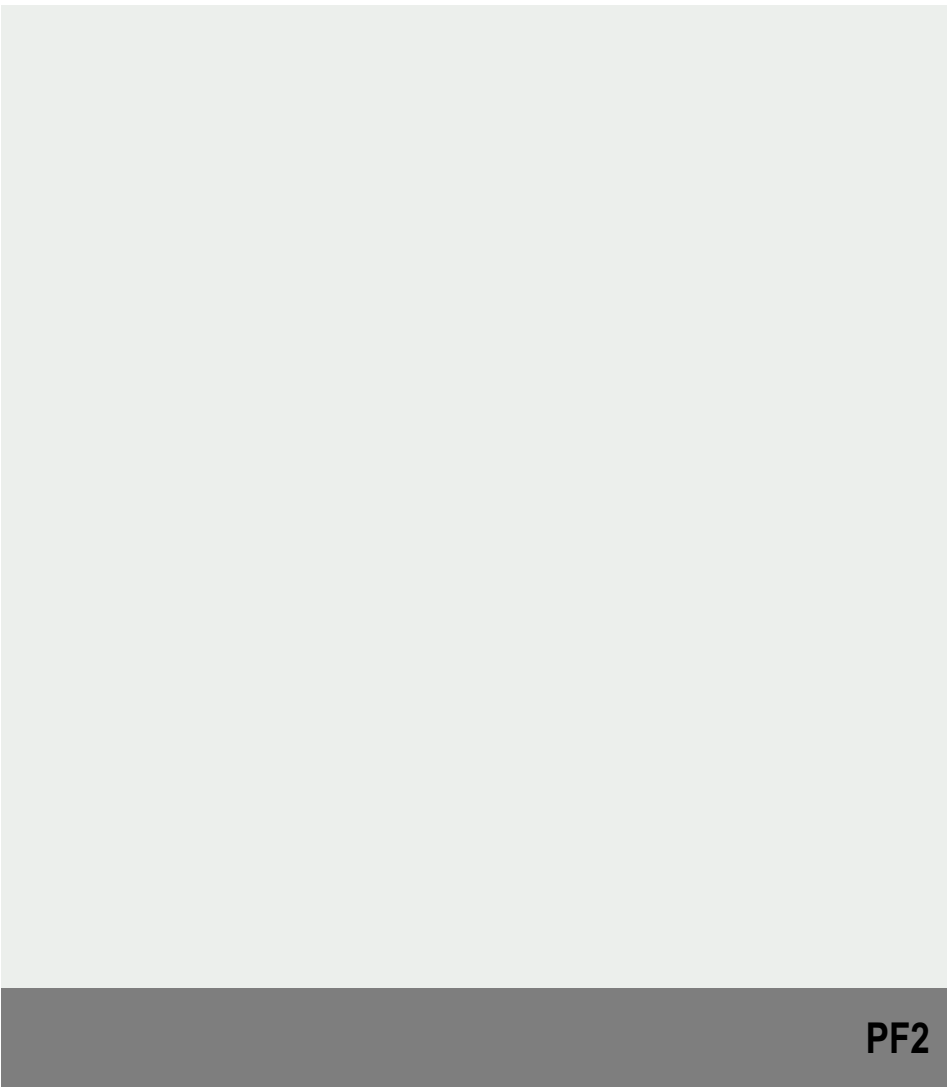
Project Title
WSU - Lot 4
158-164 Hawkesbury Road, 2a Darcy Road Westmead NSW 2145 Australia

Drawing Title
GA Sections
Detailed Section H

Scale	Project No.	Drawn by	North
@A1, 50% @A3	16001	turner	
Status	Dwg No.	Rev	
For Information	DA-310-006	V	

TURNER

L7, ONE Oxford Street
Darlinghurst NSW 2010
Australia
T +61 2 8668 0000
F +61 2 8668 0088
turner@tdo.com.au



Elevation / Section Legend

- BAL1

Balustrade Type 1:
Semi-Frameless clear glass balustrade.
Framing system, finish similar to PF1
- BAL2

Balustrade Type 2:
Semi-Frameless translucent glass balustrade.
Framing system, finish similar to PF5
- BAL3

Balustrade Type 3:
Semi-Frameless clear glass balustrade fixed to
solid spandrel panel/parapet wall. Framing system,
finish similar to PF1
- BAL4

Balustrade Type 4:
Perforated Architectural metal balustrade. Finish similar to
PF7 + PF8
- BAL5

Balustrade Type 5:
Fixed vertical metal fins. Finish similar to PF8
- BRK1

Brick Type 1:
Face brick similar in colour to Bowral 'Chillingham White'
- BRK2

Brick Type 2:
Glazed 'face brick' to address landscaped areas
Colour similar to Austral Bricks 'Allure-Lulu'
- COF1

Concrete, off form
Clear finish or to landscape architect's specification
- GC1

Glass, Clear, Type 1:
Glass, clear, to Basix and Acoustic report requirements.
Aluminium framing system, finish similar to PF5
- GC2

Glass, Clear, Type 2:
Glass, clear, to Basix and Acoustic report requirements.
Aluminium framing system, finish similar to PF3
- CL1

Cladding Type 1:
Metal cladding, colour similar to PF5
- CL2

Cladding Type 2:
Metal cladding, colour similar to PF2
- CL3

Cladding Type 3:
Timber plastic composite cladding, similar to 'spotted gum'
- CL4

Cladding Type 4:
FC cladding, colour similar to PF4
- CL5

Cladding Type 5:
Metal cladding, colour similar to PF8
- CL6

Cladding Type 6:
Metal cladding, colour similar to PF7
- GT1

Glass, Translucent, Type 1:
Glass, Translucent, to Basix and Acoustic report requirements.
Aluminium framing system, finish similar to PF5

- GT2

Glass, Translucent, Type 2:
Glass, Translucent, to Basix and Acoustic report requirements.
Aluminium framing system, finish similar to PF3
- GCB1

Glass, Colourback, Type 1:
Glass, Dark Grey, to Basix and Acoustic report requirements.
Aluminium framing system, finish similar to PF5
- GCB2

Glass, Colourback, Type 2:
Glass, Dark Grey, to Basix and Acoustic report requirements.
Aluminium framing system, finish similar to PF3
- LV1

Louvre Type 1:
Fixed vertical louvre system. Aluminium, finish similar to PF2
- LV2

Louvre Type 2:
Fixed vertical louvre system. Aluminium, finish similar to PF5
- LV3

Louvre Type 3:
Fixed vertical louvre system. Aluminium, finish similar to PF8
- PC1

Precast Concrete Type 1:
Precast Concrete. Finish: penetrating low maintenance
stain finish equal to Keim concrete Lasur system, similar to PF1
- PC2

Precast Concrete Type 2:
Precast Concrete. Finish: penetrating low maintenance
stain finish equal to Keim concrete Lasur system, similar to PF4
- PC3

Precast Concrete Type 3:
Vertical Profiled Precast Concrete. Finish: penetrating low maintenance
stain finish equal to Keim concrete Lasur system, similar to PF1
- PC4

Precast Concrete Type 4:
Natural Concrete. Finish with horizontal dummy joints
- PF1

Paint Finish Type 1:
Natural White
Finish similar to Dulux 'Natural White'
- PF2

Paint Finish Type 2:
Finish similar to Dulux 'Flat White' powder coat
- PF3

Paint Finish Type 3:
Finish similar to Dulux 'Flooded Gun'
- PF4

Paint Finish Type 4:
Finish similar to Dulux 'Black Caviar'
- PF5

Paint Finish Type 5:
Finish similar to Dulux powder coat 'Black Ace'
- PF6

Paint Finish Type 6:
Finish similar to Dulux 'Harold'
- PF7

Paint Finish Type 7:
Finish similar to Dulux Electro 'scintillation' powder coat
- PF8

Paint Finish Type 8:
Finish similar to Dulux Electro 'Shimmering
Champagne' powder coat

- SC1

Screen Type 1:
Aluminium slat fence, finish similar to PF2
- SC2

Screen Type 2:
Metal louvered screen at mechanical
air intake. Colour to match PF5
- SC3

Screen Type 3:
Metal framed shedding structure with timber battens
- SC4

Screen Type 4:
Vertical aluminium screen, finish to match PF5
- SC5

Screen Type 5:
Metal louvered screen at mechanical
air intake. Colour to match PF1
- SC6

Screen Type 6:
Metal louvered screen at mechanical
air intake. Colour to match PF6

NOTES
THIS DRAWING IS THE COPYRIGHT © OF TURNER. NO REPRODUCTION WITHOUT PERMISSION. UNLESS NOTED OTHERWISE THIS
DRAWING IS NOT FOR CONSTRUCTION. ALL DIMENSIONS AND LEVELS ARE TO BE CHECKED ON SITE PRIOR TO THE COMMENCEMENT
OF WORK. INFORM TURNER OF ANY DISCREPANCIES FOR CLARIFICATION BEFORE PROCEEDING WITH WORK. DRAWINGS ARE NOT TO
BE SCALED. USE ONLY FIGURED DIMENSIONS. REFER TO CONSULTANT DOCUMENTATION FOR FURTHER INFORMATION.

DLG2 Quality Endorsed Company ISO 9001:2008, Registration Number 28478
Notified Architect: Nicholas Turner, 8895, ABN 88 064 084 911

KEY PLAN

LEGEND

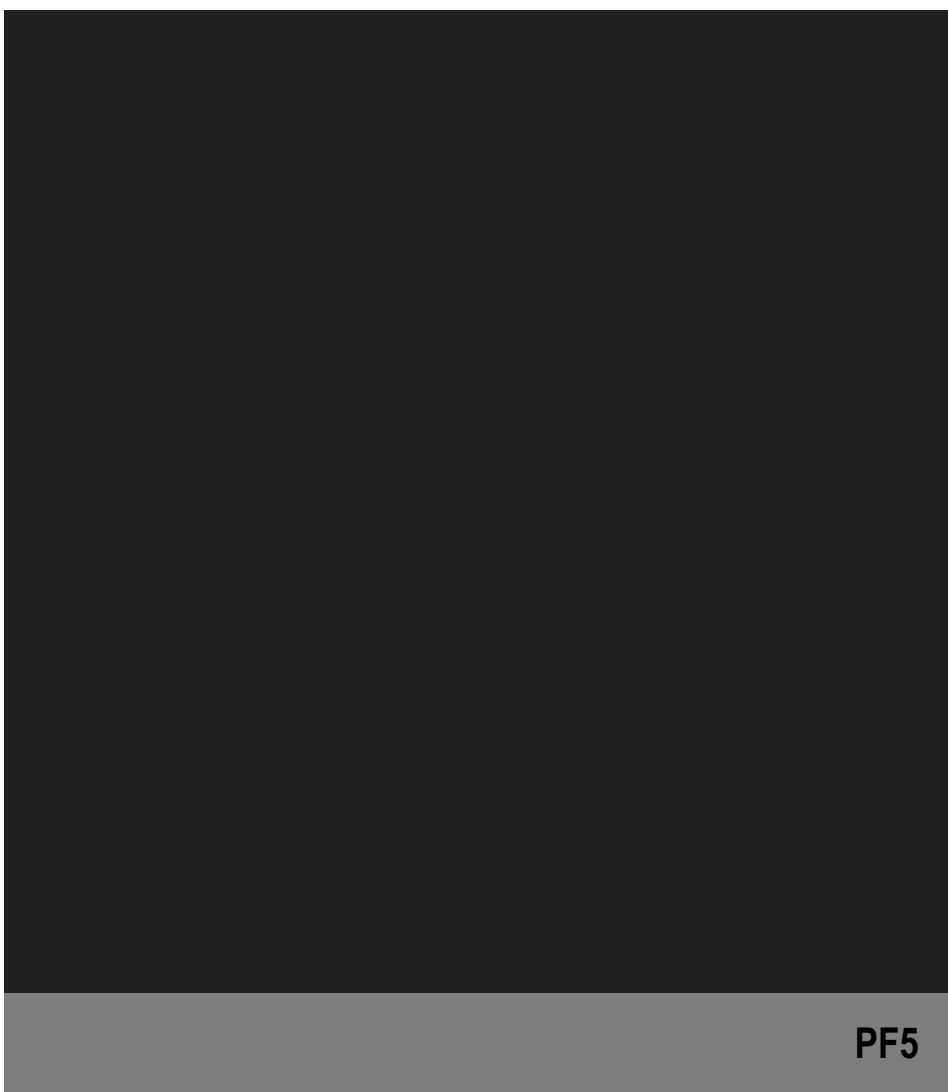
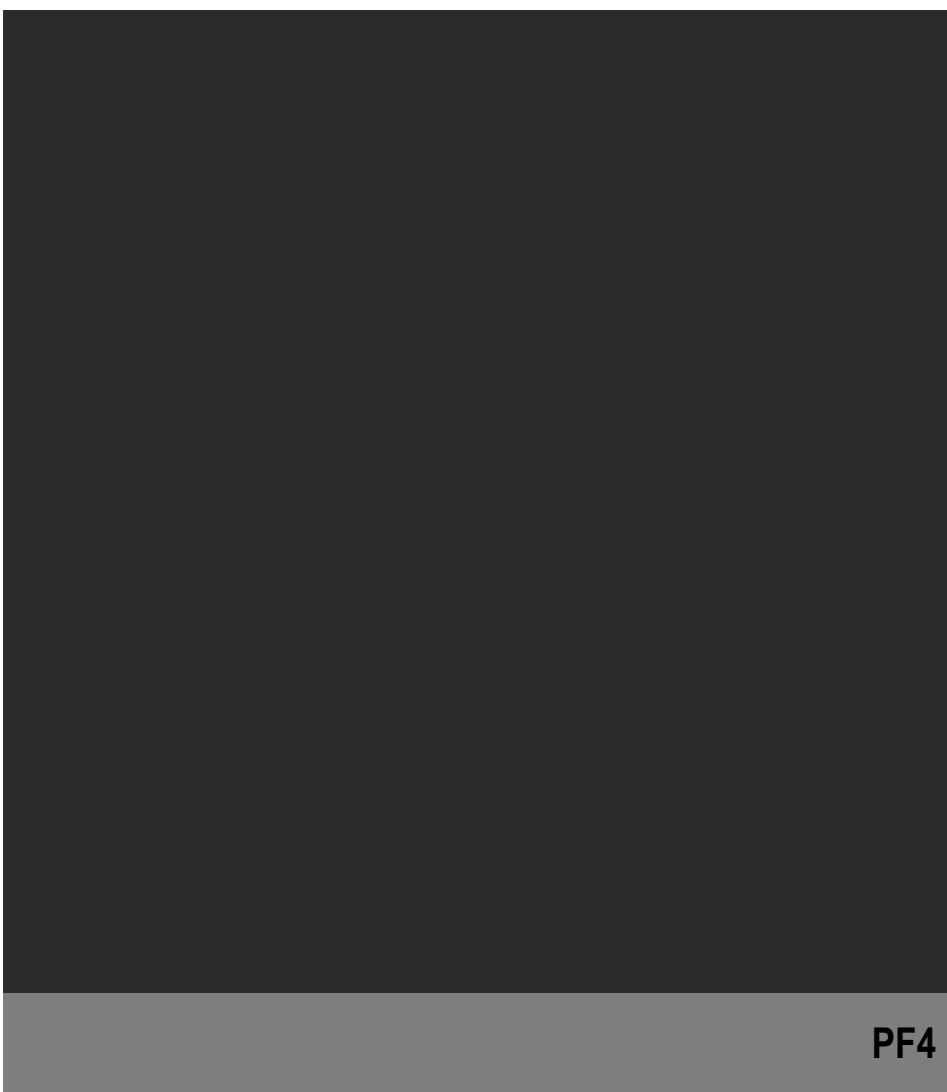
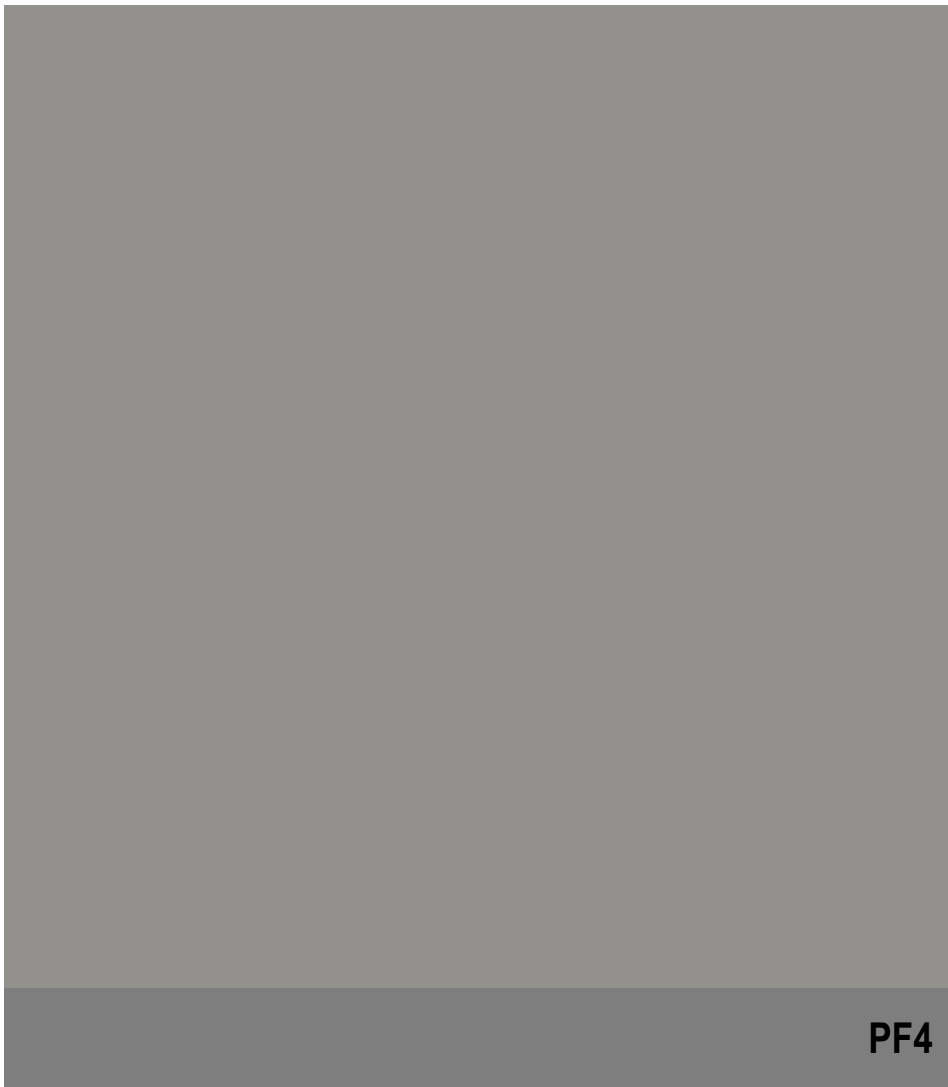
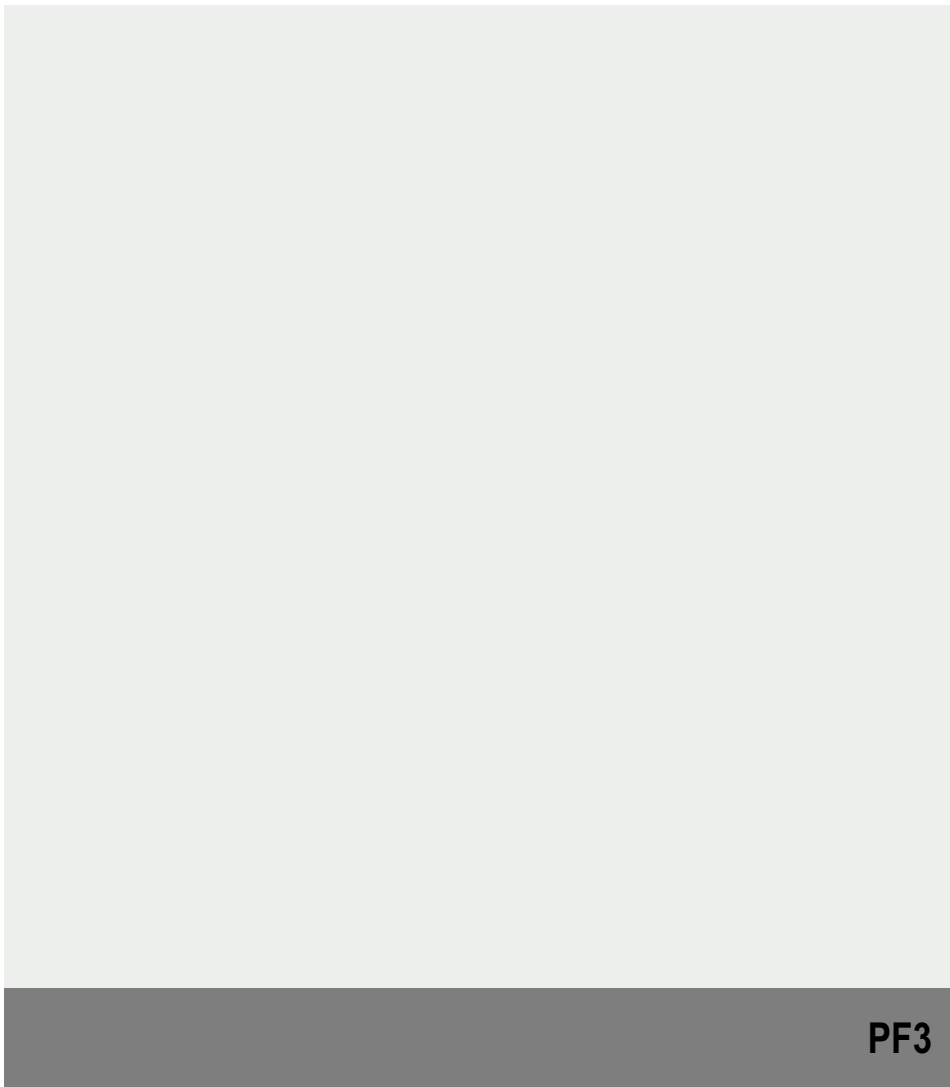
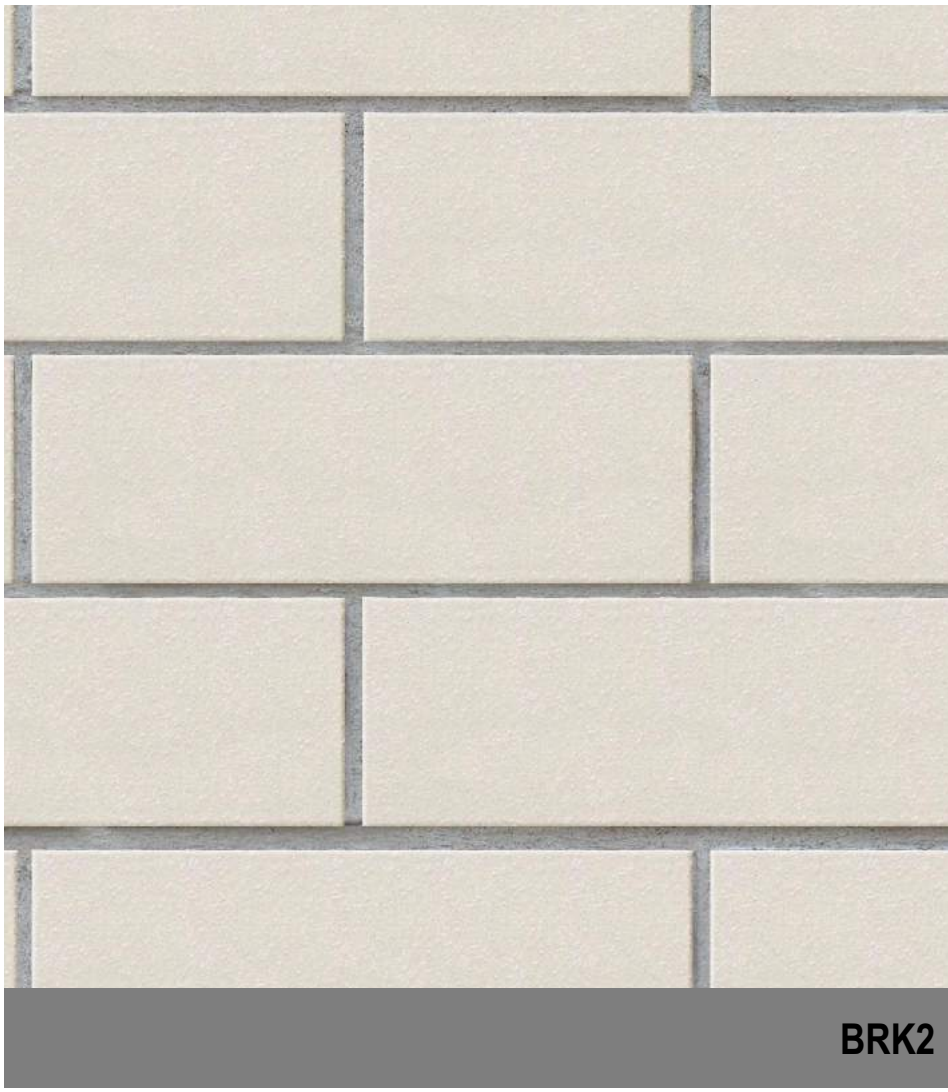
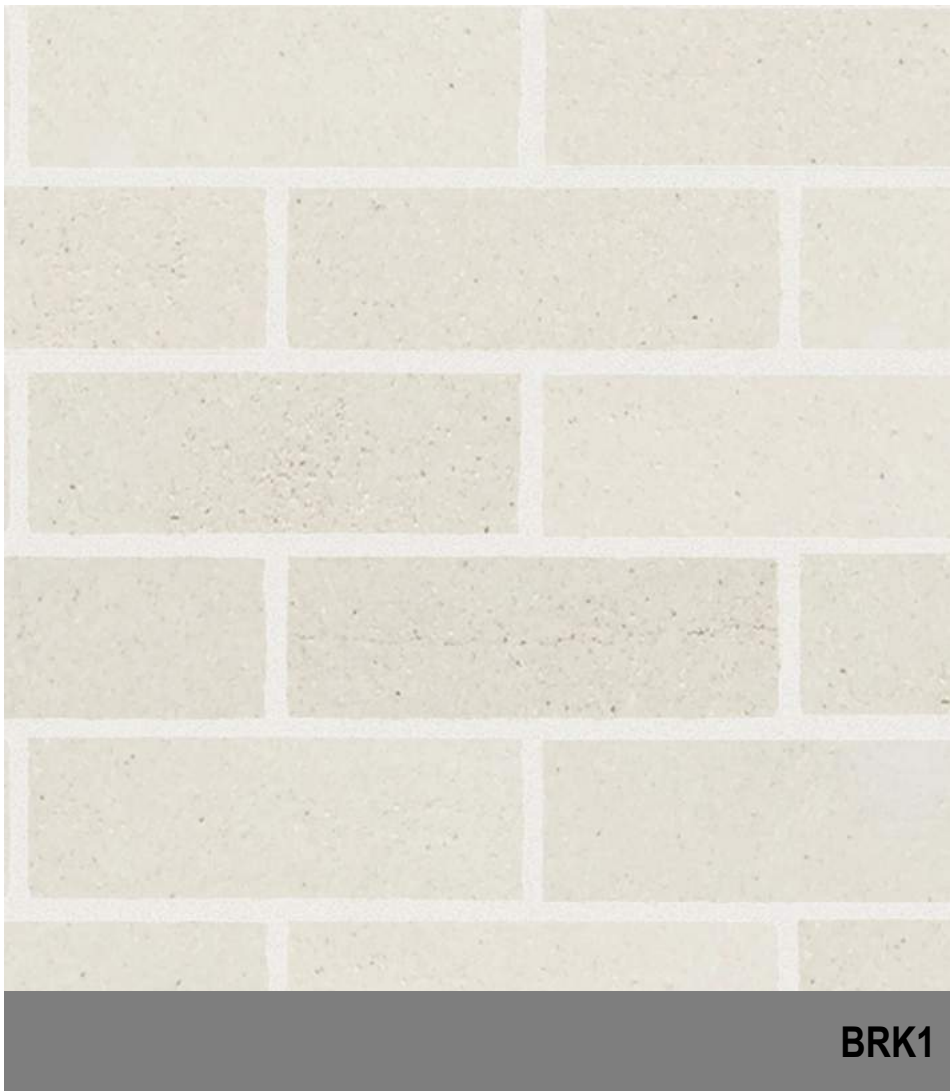
Rev.	Date	Approved by	Revision Notes
T	22.06.17	JM	Development Application Amendments
U	03.07.17	JM	Development Application Amendments

CLIENT
Deicorp
Level 3, 161 Redfern Street, Redfern
NSW 2016, Australia

Project Title WSU - Lot 4 158-164 Hawkesbury Road, 2a Darcy Road Westmead NSW 2145 Australia			
Drawing Title Materials Board Materials and Finishes D			
Scale @A1, 50%@A3	Project No. 16001	Drawn by turner	North
Status For Information	Dwg No. DA-990-002	Rev U	

TURNER

L7, ONE Oxford Street
Darlinghurst NSW 2010
Australia
T +61 2 8668 0000
F +61 2 8668 0088
turner@tdo.com.au



Elevation / Section Legend

- BAL1** Balustrade Type 1:
Semi-Frameless clear glass balustrade.
Framing system, finish similar to PF1
- BAL2** Balustrade Type 2:
Semi-Frameless translucent glass balustrade.
Framing system, finish similar to PF5
- BAL3** Balustrade Type 3:
Semi-Frameless clear glass balustrade fixed to
solid spandrel panel/parapet wall. Framing system,
finish similar to PF1
- BAL4** Balustrade Type 4:
Perforated Architectural metal balustrade. Finish similar to
PF7 + PF8
- BAL5** Balustrade Type 5:
Fixed vertical metal fins. Finish similar to PF8

- BRK1** Brick Type 1:
Face brick similar in colour to Bowral 'Chillingham White'
- BRK2** Brick Type 2:
Glazed 'face brick' to address landscaped areas
Colour similar to Austral Bricks 'Allure-Lulu'
- COF1** Concrete, off form
Clear finish or to landscape architect's specification
- GC1** Glass, Clear, Type 1:
Glass, clear, to Basix and Acoustic report requirements.
Aluminium framing system, finish similar to PF5
- GC2** Glass, Clear, Type 2:
Glass, clear, to Basix and Acoustic report requirements.
Aluminium framing system, finish similar to PF3
- CL1** Cladding Type 1:
Metal cladding, colour similar to PF5

- CL2** Cladding Type 2:
Metal cladding, colour similar to PF2
- CL3** Cladding Type 3:
Timber plastic composite cladding, similar to 'spotted gum'
- CL4** Cladding Type 4:
FC cladding, colour similar to PF4
- CL5** Cladding Type 5:
Metal cladding, colour similar to PF8
- CL6** Cladding Type 6:
Metal cladding, colour similar to PF7
- GT1** Glass, Translucent, Type 1:
Glass, Translucent, to Basix and Acoustic report requirements.
Aluminium framing system, finish similar to PF5

- GT2** Glass, Translucent, Type 2:
Glass, Translucent, to Basix and Acoustic report requirements.
Aluminium framing system, finish similar to PF3
- GCB1** Glass, Colourback, Type 1:
Glass, Dark Grey, to Basix and Acoustic report requirements.
Aluminium framing system, finish similar to PF5
- GCB2** Glass, Colourback, Type 2:
Glass, Dark Grey, to Basix and Acoustic report requirements.
Aluminium framing system, finish similar to PF3
- LV1** Louvre Type 1:
Fixed vertical louvre system. Aluminium, finish similar to PF2
- LV2** Louvre Type 2:
Fixed vertical louvre system. Aluminium, finish similar to PF5
- LV3** Louvre Type 3:
Fixed vertical louvre system. Aluminium, finish similar to PF8

- PC1** Precast Concrete Type 1:
Precast Concrete. Finish: penetrating low maintenance
stain finish equal to Keim concrete Lasur system, similar to PF1
- PC2** Precast Concrete Type 2:
Precast Concrete. Finish: penetrating low maintenance
stain finish equal to Keim concrete Lasur system, similar to PF4
- PC3** Precast Concrete Type 3:
Vertical Profiled Precast Concrete. Finish: penetrating low maintenance
stain finish equal to Keim concrete Lasur system, similar to PF1
- PC4** Precast Concrete Type 4:
Natural Concrete. Finish with horizontal dummy joints
- PF1** Paint Finish Type 1:
Natural White
Finish similar to Dulux 'Natural White'
- PF2** Paint Finish Type 2:
Finish similar to Dulux 'Flat White' powder coat

- PF3** Paint Finish Type 3:
Finish similar to Dulux 'Flooded Gun'
- PF4** Paint Finish Type 4:
Finish similar to Dulux 'Black Caviar'
- PF5** Paint Finish Type 5:
Finish similar to Dulux powder coat 'Black Ace'
- PF6** Paint Finish Type 6:
Finish similar to Dulux 'Harold'
- PF7** Paint Finish Type 7:
Finish similar to Dulux Electro 'scintillation' powder coat
- PF8** Paint Finish Type 8:
Finish similar to Dulux Electro 'Shimmering
Champagne' powder coat

- SC1** Screen Type 1:
Aluminium slat fence, finish similar to PF2
- SC2** Screen Type 2:
Metal louvered screen at mechanical
air intake. Colour to match PF5
- SC3** Screen Type 3:
Metal framed shedding structure with timber battens
- SC4** Screen Type 4:
Vertical aluminium screen, finish to match PF5
- SC5** Screen Type 5:
Metal louvered screen at mechanical
air intake. Colour to match PF1
- SC6** Screen Type 6:
Metal louvered screen at mechanical
air intake. Colour to match PF6

NOTES

THIS DRAWING IS THE COPYRIGHT © OF TURNER. NO REPRODUCTION WITHOUT PERMISSION. UNLESS NOTED OTHERWISE THIS
DRAWING IS NOT FOR CONSTRUCTION. ALL DIMENSIONS AND LEVELS ARE TO BE CHECKED ON SITE PRIOR TO THE COMMENCEMENT
OF WORK. INFORM TURNER OF ANY DISCREPANCIES FOR CLARIFICATION BEFORE PROCEEDING WITH WORK. DRAWINGS ARE NOT TO
BE SCALED. USE ONLY PICTURED DIMENSIONS. REFER TO CONSULTANT DOCUMENTATION FOR FURTHER INFORMATION.

DLG2 Quality Endorsed Company ISO 9001:2008, Registration Number 28478
Notified Architect: Nicholas Turner, 8895, AEN 88 064 084 911

KEY PLAN

LEGEND

Rev.	Date	Approved by	Revision Notes
T	22.06.17	JM	Development Application Amendments
U	03.07.17	JM	Development Application Amendments
V	31.06.17	JM	Development Application Amendments

CLIENT

Deicorp
Level 3, 161 Redfern Street, Redfern
NSW 2016, Australia

Project Title

WSU - Lot 4
158-164 Hawkesbury Road, 2a Darcy Road Westmead NSW 2145 Australia

Drawing Title

Materials Board
Materials and Finishes E

Scale 1:0.81 @A1, 50%@A3	Project No. 16001	Drawn by turner	North
Status For Information	Dwg No. DA-990-003	Rev V	

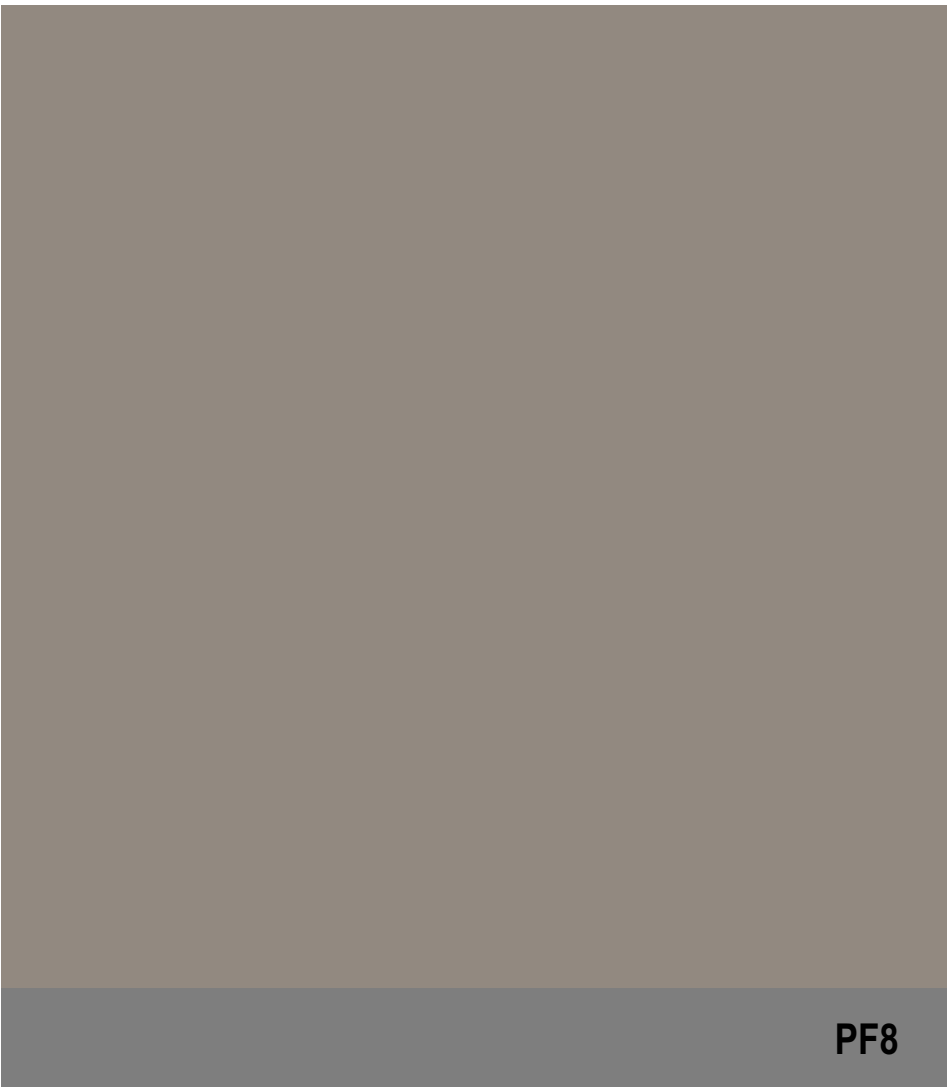
TURNER

L7, ONE Oxford Street
Darlinghurst NSW 2010
Australia

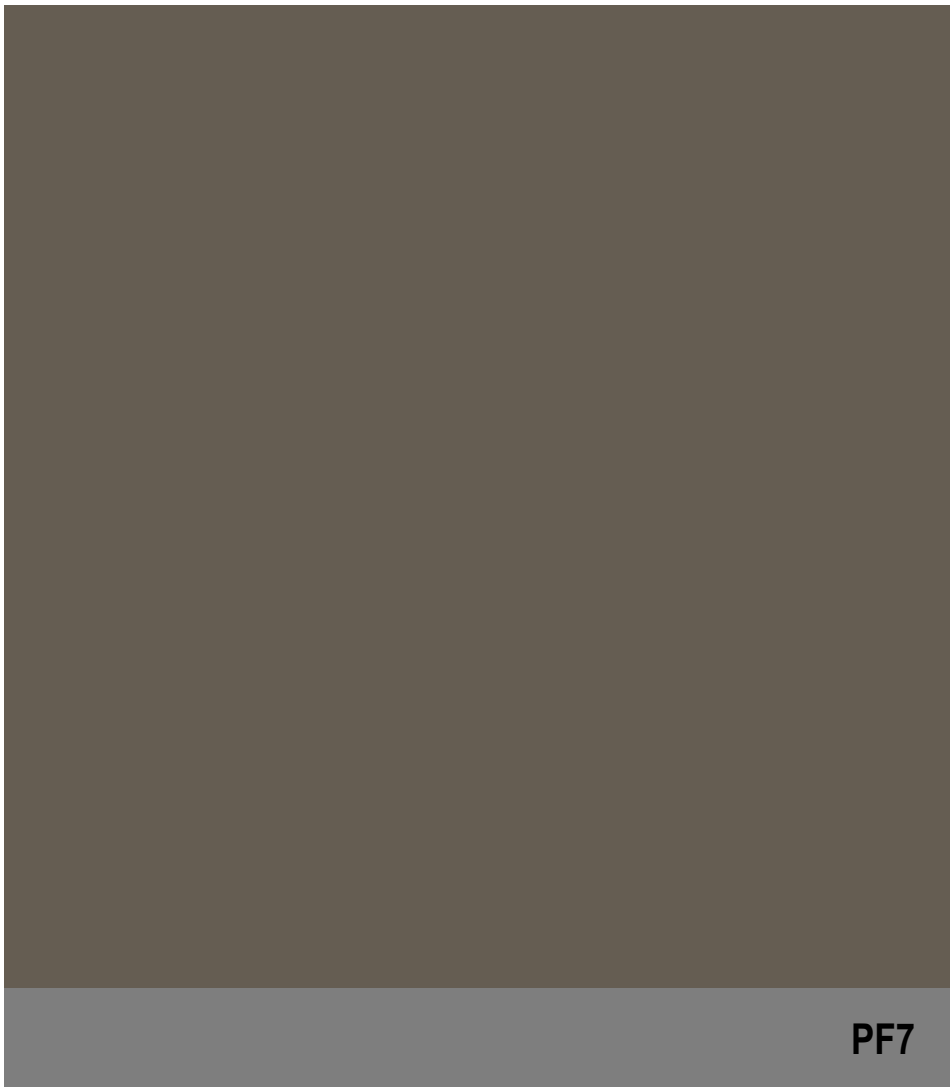
T +61 2 8668 0000
F +61 2 8668 0088
www.turner.com.au



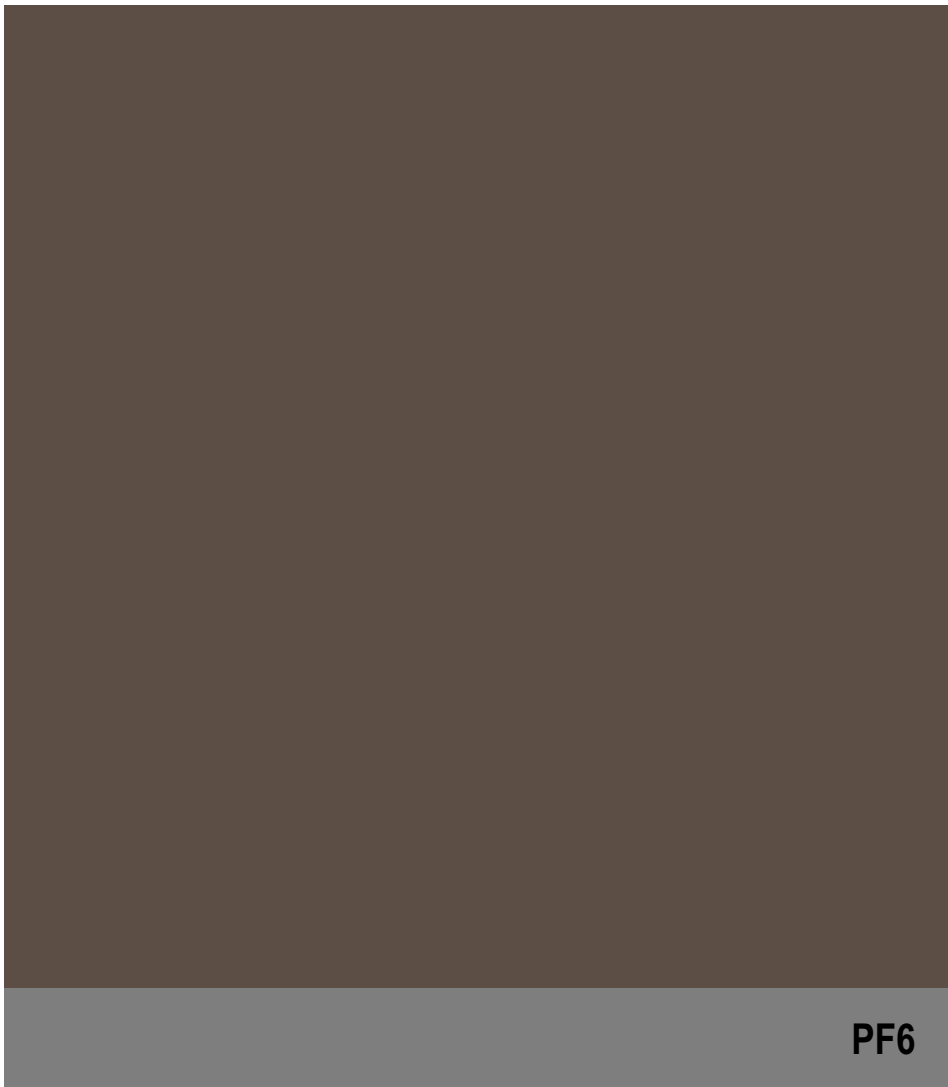
COF1



PF8



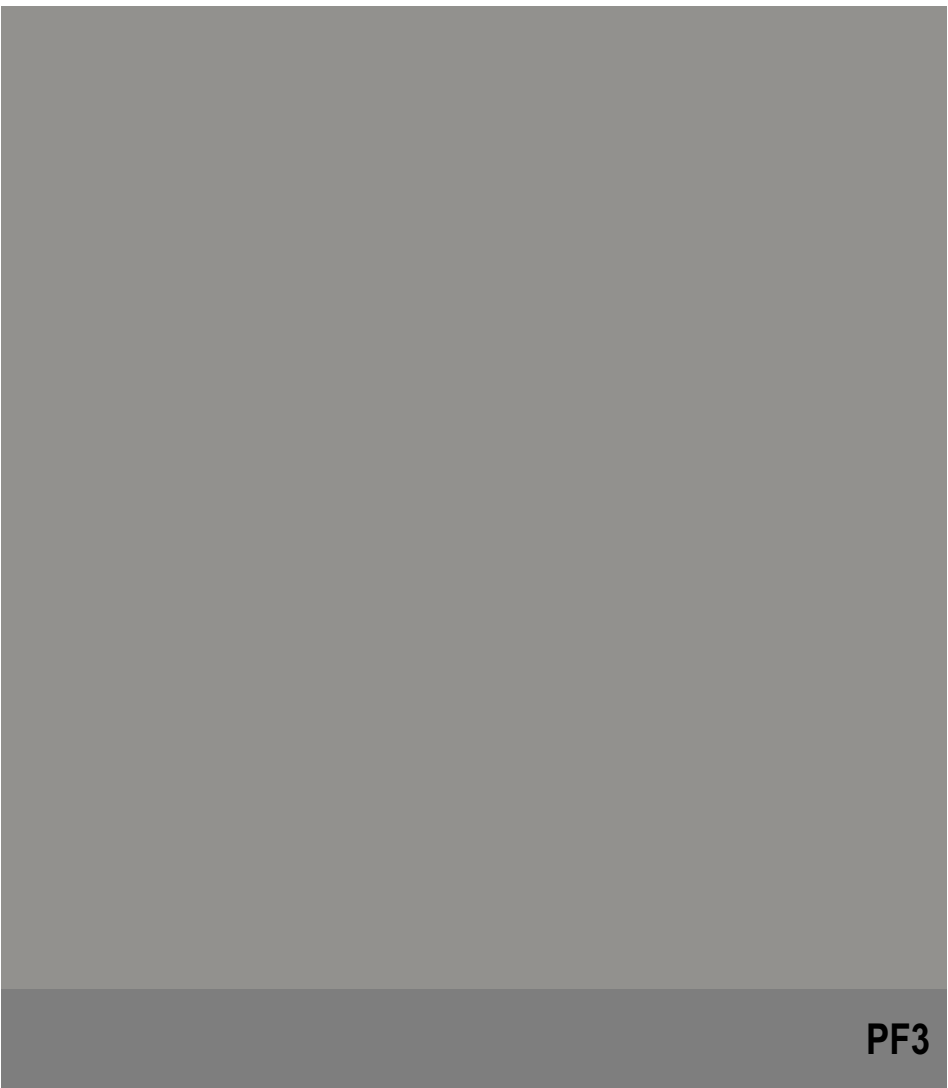
PF7



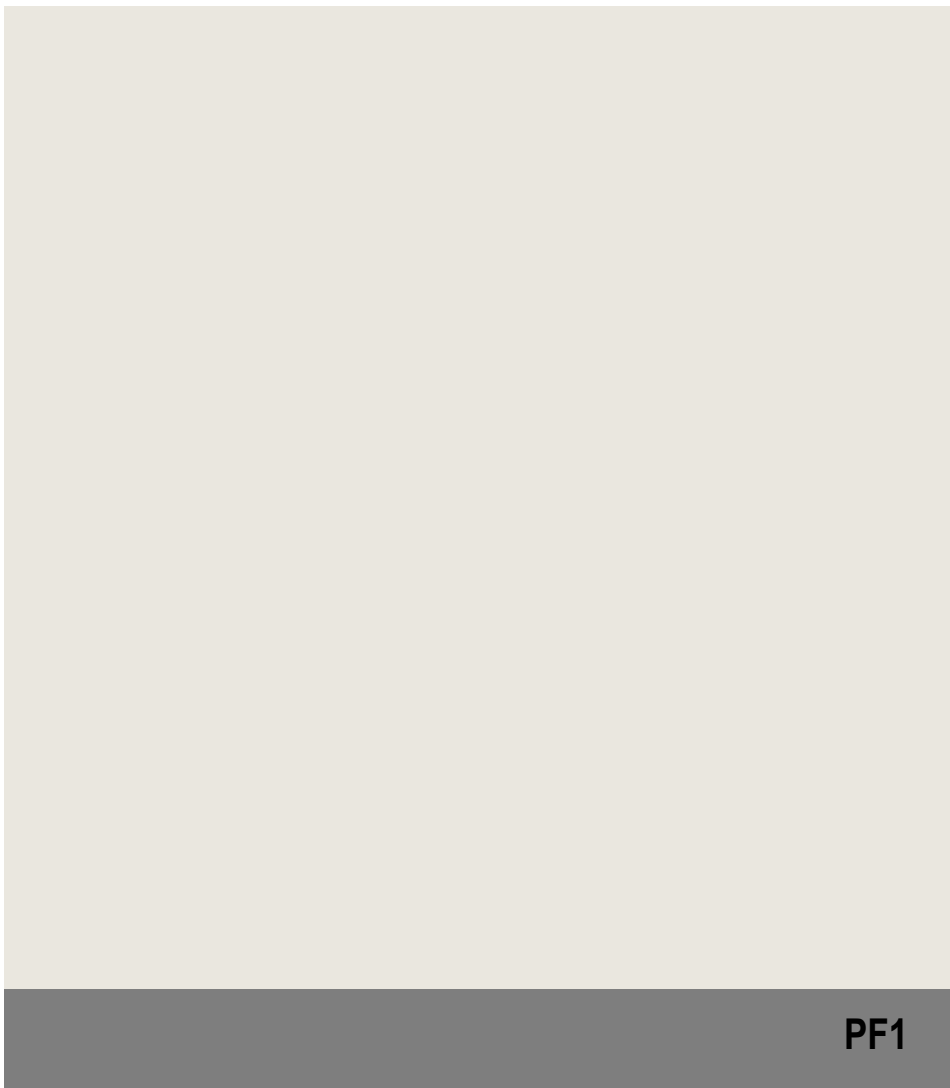
PF6



PRECEDENT IMAGE



PF3



PF1



GT2



GC2



GCB2

Elevation / Section Legend

- BAL1** Balustrade Type 1:
Semi-Frameless clear glass balustrade.
Framing system, finish similar to PF1
- BAL2** Balustrade Type 2:
Semi-Frameless translucent glass balustrade.
Framing system, finish similar to PF5
- BAL3** Balustrade Type 3:
Semi-Frameless clear glass balustrade fixed to
solid spandrel panel/parapet wall. Framing system,
finish similar to PF1
- BAL4** Balustrade Type 4:
Perforated Architectural metal balustrade. Finish similar to
PF7 + PF8
- BAL5** Balustrade Type 5:
Fixed vertical metal fins. Finish similar to PF8

- BRK1** Brick Type 1:
Face brick similar in colour to Bowral 'Chillingham White'
- BRK2** Brick Type 2:
Glazed face brick to address landscaped areas
Colour similar to Austral Bricks 'Allure-Lulu'
- COF1** Concrete, off form
Clear finish or to landscape architect's specification
- GC1** Glass, Clear, Type 1:
Glass, clear, to Basix and Acoustic report requirements.
Aluminium framing system, finish similar to PF5
- GC2** Glass, Clear, Type 2:
Glass, clear, to Basix and Acoustic report requirements.
Aluminium framing system, finish similar to PF3
- CL1** Cladding Type 1:
Metal cladding, colour similar to PF5

- CL2** Cladding Type 2:
Metal cladding, colour similar to PF2
- CL3** Cladding Type 3:
Timber plastic composite cladding, similar to 'spotted gum'
- CL4** Cladding Type 4:
FC cladding, colour similar to PF4
- CL5** Cladding Type 5:
Metal cladding, colour similar to PF8
- CL6** Cladding Type 6:
Metal cladding, colour similar to PF7
- GT1** Glass, Translucent, Type 1:
Glass, Translucent, to Basix and Acoustic report requirements.
Aluminium framing system, finish similar to PF5

- GT2** Glass, Translucent, Type 2:
Glass, Translucent, to Basix and Acoustic report requirements.
Aluminium framing system, finish similar to PF3
- GCB1** Glass, Colourback, Type 1:
Glass, Dark Grey, to Basix and Acoustic report requirements.
Aluminium framing system, finish similar to PF5
- GCB2** Glass, Colourback, Type 2:
Glass, Dark Grey, to Basix and Acoustic report requirements.
Aluminium framing system, finish similar to PF3
- LV1** Louvre Type 1:
Fixed vertical louvre system. Aluminium, finish similar to PF2
- LV2** Louvre Type 2:
Fixed vertical louvre system. Aluminium, finish similar to PF5
- LV3** Louvre Type 3:
Fixed vertical louvre system. Aluminium, finish similar to PF8

- PC1** Precast Concrete Type 1:
Precast Concrete. Finish: penetrating low maintenance
stain finish equal to Keim concrete Lasur system, similar to PF1
- PC2** Precast Concrete Type 2:
Precast Concrete. Finish: penetrating low maintenance
stain finish equal to Keim concrete Lasur system, similar to PF4
- PC3** Precast Concrete Type 3:
Vertical Profiled Precast Concrete. Finish: penetrating low maintenance
stain finish equal to Keim concrete Lasur system, similar to PF1
- PC4** Precast Concrete Type 4:
Natural Concrete. Finish with horizontal dummy joints
- PF1** Paint Finish Type 1:
Natural White
Finish similar to Dulux 'Natural White'
- PF2** Paint Finish Type 2:
Finish similar to Dulux 'Flat White' powder coat

- PF3** Paint Finish Type 3:
Finish similar to Dulux 'Flooded Gun'
- PF4** Paint Finish Type 4:
Finish similar to Dulux 'Black Caviar'
- PF5** Paint Finish Type 5:
Finish similar to Dulux powder coat 'Black Ace'
- PF6** Paint Finish Type 6:
Finish similar to Dulux 'Harold'
- PF7** Paint Finish Type 7:
Finish similar to Dulux Electro 'scintillation' powder coat
- PF8** Paint Finish Type 8:
Finish similar to Dulux Electro 'Shimmering
Champagne' powder coat

- SC1** Screen Type 1:
Aluminium slat fence, finish similar to PF2
- SC2** Screen Type 2:
Metal louvered screen at mechanical
air intake. Colour to match PF5
- SC3** Screen Type 3:
Metal framed shedding structure with timber battens
- SC4** Screen Type 4:
Vertical aluminium screen, finish to match PF5
- SC5** Screen Type 5:
Metal louvered screen at mechanical
air intake. Colour to match PF1
- SC6** Screen Type 6:
Metal louvered screen at mechanical
air intake. Colour to match PF6

NOTES

THIS DRAWING IS THE COPYRIGHT © OF TURNER. NO REPRODUCTION WITHOUT PERMISSION. UNLESS NOTED OTHERWISE THIS
DRAWING IS NOT FOR CONSTRUCTION. ALL DIMENSIONS AND LEVELS ARE TO BE CHECKED ON SITE PRIOR TO THE COMMENCEMENT
OF WORK. INFORM TURNER OF ANY DISCREPANCIES FOR CLARIFICATION BEFORE PROCEEDING WITH WORK. DRAWINGS ARE NOT TO
BE SCALED. USE ONLY FIGURED DIMENSIONS. REFER TO CONSULTANT DOCUMENTATION FOR FURTHER INFORMATION.

DLG2 Quality Endorsed Company ISO 9001:2008, Registration Number 28478
Notified Architect: Nicholas Turner, 8895, AEN 88 064 084 911

KEY PLAN

LEGEND

Rev.	Date	Approved by	Revision Notes
T	22.06.17	JM	Development Application Amendments
U	03.07.17	JM	Development Application Amendments

CLIENT
Deicorp
Level 3, 161 Redfern Street, Redfern
NSW 2016, Australia

Project Title	Project No.	Drawn by	North
WSU - Lot 4 158-164 Hawkesbury Road, 2a Darcy Road Westmead NSW 2145 Australia	16001	turner	
Drawing Title	Dwg No.	Rev	
Materials Board Materials and Finishes F	DA-990-004	U	
Scale @A1, 50% A3			
For Information			

TURNER

L7, ONE Oxford Street
Darlinghurst NSW 2010
Australia

T +61 2 8668 0000
F +61 2 8668 0088
www.turner.com.au